



APT



WELDING MACHINES BROCHURE

The Name You Can Trust
www.apt-international.com

BX1 - MMA AC WELDING MACHINE



Barcode/Feature	BX1-250	BX1-315	BX1-400	BX1-500	BX1-630
Voltage (V)	220V/380V	220V/380V	220V/380V	220V/380V	220V/380V
Welding Current (A)	50-250	60-315	80-400	100-500	125-630
Duty Cycle (%)	35	35	35	35	35
Electrode (mm)	2.0-5.0	2.0-6.0	2.0-7.0	2.0-8.0	2.0-10.0
Weight (kg)	60	68	78	84	92



SOLDA MMA INVERTER WELDING MACHINE

Barcode/Feature	SOLDA - 315	SOLDA - 400	SOLDA - 500
Voltage (V)	3 phase 380V	3 phase 380V	3 phase 380V
Welding Current IG/MMA (A)	30-315	30-400	30-500
Duty Cycle (%)	60	60	60
Electrode (mm)	2.0-5.0	2.0-6.0	2.0-8.0
Weight (kg)	19	19	19



ZXEI - MMA AC/DC WELDING MACHINE

Barcode/Feature	ZXEI-250	ZXEI-315	ZXEI-300	ZXEI-400	ZXEI-630
Voltage (V)	220V/380V	220V/380V	220V/380V	220V/380V	220V/380V
Welding Current (A)	40-230	45-250	60-310	80-420	100-510
Duty Cycle (%)	10	35	35	35	35
Electrode (mm)	2.0-5.0	2.0-6.0	2.0-7.0	2.0-8.0	2.0-8.0
Weight (kg)	87	92	116	120	125

SOLDA MMA INVERTER WELDING MACHINE



Barcode/Feature	SOLDA-160	SOLDA-180	SOLDA-200	SOLDA-250	SOLDA-280
Voltage (V)	1 phase 220V	1 phase 220V	1 phase 220V	1 phase 220V	1 phase 220V
Welding Current (A)	20-160	20-180	20-200	20-250	20-280
Duty Cycle (%)	60	60	60	60	60
Electrode (mm)	2.0-5.0	2.0-5.0	2.0-5.0	2.0-5.0	2.0-5.0
Weight (kg)	4.5	4.8	5.2	5.4	5.6

MASTERY MMA AC WELDING MACHINE



Barcode/Feature	ZXEI - 250	ZXEI - 315	ZXEI - 400
Voltage (V)	220V	220V	220V
Welding Current IG/MMA (A)	65-180	70-200	90-250
Duty Cycle (%)	20	20	20
Electrode (mm)	2.0-4.0	2.0-4.0	2.0-5.0
Weight (kg)	26	27	28



FUSION MMA INVERTER WELDING MACHINE



Barcode/Feature	FUSION - 160	FUSION - 180	FUSION - 200
Voltage (V)	1 phase 220V	1 phase 220V	1 phase 220V
Welding Current (A)	20-160	20-170	20-180
Duty Cycle (%)	60	60	60
Electrode (mm)	2.0-5.0	2.0-5.0	2.0-5.0
Weight (kg)	4.5	4.8	5.2

WALDA MMA INVERTER WELDING MACHINE



Barcode/Feature	WALDA - 120	WALDA - 160
Voltage (V)	1 phase 220V	1 phase 220V
Welding Current (A)	20-120	20-160
Duty Cycle (%)	35	35
Electrode (mm)	2.0-3.2	2.0-5.0
Weight (kg)	3.6	3.8



MIGSTAR MIG DC WELDING MACHINE

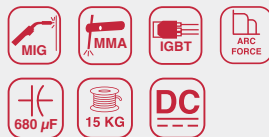


Barcode/Feature	MIGSTAR-210	MIGSTAR-250	MIGSTAR-2503	MIGSTAR-3153	MIGSTAR-3503
Voltage (V)	1 phase 220V	1 phase 220V	1 phase 220V	1 phase 220V	1 phase 220V
Welding Current (A)	50-190	50-210	35-250	35-315	35-350
Duty Cycle (%)	25	25	60	35	35
Electrode (mm)	0.8-1.0	0.8-1.0	0.8-1.0	0.8-1.2	0.8-1.2
Weight (kg)	55	60	95	108	115



PRACTIC MIG/ MAG & MMA WELDING MACHINE

Barcode/Feature	PRACTIC - 250	PRACTIC - 500
Voltage (V)	1 phase 220V	1 phase 220V
Welding Current (A)	20-250	50-600
Duty Cycle (%)	60	60
Electrode (mm)	0.8-1.2	1.2-1.6
Weight (kg)	28	30



TIG/MMA AC/DC WELDING MACHINE

Barcode/Feature	TIG - 200	TIG - 230
Voltage (V)	1 phase 220V	1 phase 220V
Welding Current TIG/MMA (A)	5-200/20-180	5-250/20-200
Duty Cycle (%)	60	60
Electrode (mm)	2.0-5.0	2.0-5.0
Weight (kg)	12	13



WS - TIG/MMA WELDING MACHINE



Barcode/Feature	WS - 200	WS - 250
Voltage (V)	1 phase 220V	1 phase 220V
Welding Current TIG/MMA (A)	5-200	5-250
Duty Cycle (%)	60	60
Electrode (mm)	2.0-3.2	2.0-5.2
Weight (kg)	12	13



LGK8 PLASMA CUTTING MACHINE

Barcode/Feature	LGK8 - 40	LGK8 - 63	LGK8 - 100
Voltage (V)	1 phase 220V	3 phase 380V	3 phase 380V
Welding Current IG/MMA (A)	10-40	20-60	20-100
Duty Cycle (%)	60	60	60
Electrode (mm)	10	20	35
Weight (kg)	9	20	28



DN - SPOT WELDING MACHINE

CONSUMABLES

Barcode/Feature	DN - 10	DN - 16	DN - 20	35
Voltage (V)	1 phase 220V	1 phase 220V	1 phase 220V	1 phase 220V
Welding Current (A)	5400	6400	7100	7600
Duty Cycle (%)	2	2	2	2
Electrode (mm)	Water Cooling	Water Cooling	Water Cooling	Water Cooling
Weight (kg)	55	68	75	81



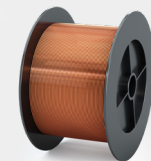
AWS - E6013

LOW CARBON STEEL
WELDING ELECTRODES



Diameter (mm)	2.5	3.3	4.0	5.0
Current(A) AC or DC	70-90	90-140	140-190	180-240

WELDING WIRE ER70S-6



Welding solid wire **ER70S-6**
Ø sizes: **0.8 mm up to 1.6 mm**



AFT

