

# APT



**2025**

## HIGH-PRESSURE CLEANER CATALOGUE

The Name You Can Trust



The Name You Can Trust

# APT International

## About:

With Decades of experience, APT International is a global emerging brand that is determined to lead, with solid experience in Product development, manufacturing, distributing, selling, and servicing world class products. We aspire to become a global brand that is trusted by our customers for our tools, accessories, and equipment.

Believing that to build a great tool you need great materials is the driver of our manufacturing process, and for that we source the absolute best raw materials and components to build the most powerful and efficient tool for our customers to rely on.

We put our customers at the heart of everything we do, and we make sure that our wide range of products is available for them in every market we enter through a strong network of central distribution centers, local distributors, and retailers. Complemented with a vast network of service centers equipped with highly qualified technicians delivering a world class customer service quality to ensure our customers complete satisfaction.

## Our Values:

**Reliability:** Our tools are built to last, for our customers to trust that they will consistently deliver the same quality every time.

**Quality:** We have a passionate commitment to providing high quality tools that exceed our customers' expectations.

**Value for Money:** Our advanced production capabilities enable us to offer our customers an unmatched combination of reliability, quality & price.

**Innovation:** We continuously strive to bring innovative solutions, for our customers to have the tools they need to get the job done.

**Customer Focus:** Our customers are at the heart of everything we do, we listen to their needs and work to deliver what they desire.

# CONTENTS

DOMESTIC HIGH PRESSURE WASHER	2-5
-------------------------------	-----

COMMERCIAL HIGH PRESSURE WASHER	6-10
---------------------------------	------

COMMERCIAL HIGH PRESSURE WASHER - ASSEMBLED SETS	11-20
--	-------

HIGH-PRESSURE WATER PUMP	21-22
--------------------------	-------



**APT**

## DW20090

## High-pressure Washer

### TECHNICAL DATA

Rated/Max. Pressure	90 Bar
Rated/Max Flow	6L/Min
Motor Power	1500Watt
Motor Type	Induction Motor
Volt/Freq.	100-127V – 220-240V/50-60 HZ
Carton Size	410x380x370mm

Also Available as :

**DW20090-G**    **G-Type**

### Accessories:



## DW20123

## High-pressure Washer

### TECHNICAL DATA

Rated/Max. Pressure	120 Bar
Rated/Max Flow	6L/Min
Motor Power	1800Watt
Motor Type	Induction Motor
Volt/Freq.	100-127V – 220-240V/50-60 HZ
Carton Size	430x400x360mm

Also Available as :

**DW20123-G**    **G-Type**

### Accessories:



## DW20126

## High-pressure Washer

### TECHNICAL DATA

Rated/Max. Pressure	120 Bar
Rated/Max Flow	6L/Min
Motor Power	1800Watt
Motor Type	Induction Motor
Volt/Freq.	100-127V – 220-240V/50-60 HZ
Carton Size	500x405x410mm

Also Available as :

**DW20126-G**    **G-Type**

### Accessories:





## DW-LP318-1400A

## High-pressure Washer

### Features:

- 3 Axial-plunger wobble-plate pump.
- Tempered stainless steel plunger.
- Total Stop System.
- Self-resetting thermal protector.
- Quick-connect accessories.
- Equipped with wheels and handle
- Motor internal winding: Copper
- Power cord with plug.
- Self priming.

### Accessories:



### TECHNICAL DATA

Rated/Max. Pressure	80/110 Bar
Rated/Max Flow	5.5/6.5L/Min
Motor Power	1400Watt
Motor Type	Carbon Brush Motor
Volt/Freq.	AC220- 240V 50/60Hz



## DW-LP307-1400A

## High-pressure Washer

### Features:

- 3 Axial-plunger wobble-plate pump.
- Tempered stainless steel plunger.
- Total Stop System.
- Self-resetting thermal protector.
- Quick-connect accessories.
- Equipped with wheels and handle.
- Motor internal winding: Copper.
- Power cord with plug.
- Self priming.

### Accessories:



### TECHNICAL DATA

Rated/Max. Pressure	80/110 Bar
Rated/Max Flow	5.5/6.5L/Min
Motor Power	1400Watt
Motor Type	Carbon Brush Motor
Volt/Freq.	AC220- 240V 50/60Hz



## DW-LP407-1800A

## High-pressure Washer

### Features:

- 3 Axial-plunger wobble-plate pump.
- Tempered stainless steel plunger.
- Total Stop System.
- Self-resetting thermal protector.
- Quick-connect accessories.
- Equipped with wheels and handle.
- Motor internal winding: Copper
- Power cord with plug.
- Self priming.

### Accessories:



### TECHNICAL DATA

Rated/Max. Pressure	100/140 Bar
Rated/Max Flow	6.0/7.0L/Min
Motor Power	1800Watt
Motor Type	Carbon Brush Motor
Volt/Freq.	AC220- 240V 50/60Hz



## DW-LP707-2200A

## High-pressure Washer

### Features:

- 3 Axial-plunger wobble-plate pump.
- Tempered stainless steel plunger.
- Total Stop System.
- Self-resetting thermal protector.
- Quick-connect accessories.
- Equipped with wheels and aluminum telescopic handle.
- Motor internal winding: Copper- Power cord with plug.
- Built-in detergent tank.
- Self priming.

### Accessories:



### TECHNICAL DATA

Rated/Max. Pressure	120/170 Bar
Rated/Max Flow	6.5/7.5L/Min
Motor Power	2200Watt
Motor Type	Carbon Brush Motor
Volt/Freq.	AC220- 240V 50/60Hz



## DW-LP707-K2200B

## High-pressure Washer

### Features:

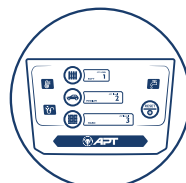
- 3 Axial-plunger wobble-plate pump.
- Tempered stainless steel plunger.
- Total Stop System.
- Self-resetting thermal protector.
- Quick-connect accessories.
- Equipped with wheels and aluminum telescopic handle.
- Equipped with functional hose reel.
- Equipped with electronic control panel.
- Motor internal winding: Copper
- Power cord with plug.
- Built-in detergent tank.
- Self priming.

### Accessories:



### TECHNICAL DATA

Rated/Max. Pressure	130/180 Bar
Rated/Max Flow	6.5/7.5L/Min
Motor Power	2200Watt
Motor Type	Carbon Brush Motor
Volt/Freq.	AC220- 240V 50/60Hz



Electronic Control Panel



## DW-LP707-G2500B

## High-pressure Washer

### Features:

- 3 Axial-plunger wobble-plate pump.
- Tempered stainless steel plunger.
- Total Stop System.
- Self-resetting thermal protector.
- Quick-connect accessories.
- Equipped with wheels and aluminum telescopic handle.
- Power cord with plug.
- Built-in detergent tank.
- Self priming.
- Motor internal winding: Copper

### Accessories:



### TECHNICAL DATA

Rated/Max. Pressure	130/195 Bar
Rated/Max Flow	7.0/7.8L/Min
Motor Power	2500Watt
Motor Type	Induction Motor
Volt/Freq.	AC220-240V~50/60Hz



## DW-LP-593

## High-pressure Washer

### Features:

- Performance-approved motor.
- Motor with aluminum casing.
- Quick connect nozzles 0° , 25°
- 8 Inches wheels.
- Convenient hose and gun hook.
- 5 Meters Cable.
- Total Stop System.

### Accessories:



Trigger Gun



Water Filter



8 Meter  
Hose



Water  
Inlet Hose

### TECHNICAL DATA

Rated/Max. Pressure	85 Bar
Rated/Max Flow	10L/Min
Motor Power	2200Watt
Motor Type	Induction Motor
Volt	AC 220 V
NW/GW	26/28Kg
Carton Size	585x380x410mm



## DW-LP-16MB

## High-pressure Washer

### Features:

- Performance-approved motor.
- Motor with aluminum casing.
- Commercial grade direct drive brass cylinder ceramic plungers radial direction pump.
- Quick connect nozzles 0° , 15° , 25° , 40°
- Pressure adjustable.
- 7 Inches wheels.
- In-line water filter.
- Convenient hose and gun hook.
- 5 Meters Cable.
- Plastic cover and protection box.

### Accessories:



Trigger Gun



8 Meter  
Hose



Water  
Inlet Hose

### TECHNICAL DATA

Rated/Max. Pressure	100 Bar
Rated/Max Flow	12.8L/Min
Motor Power	2500Watt
Revolution	2900 rpm
Volt	AC 220 V
NW/GW	32/34.2Kg
Carton Size	580x420x395mm





## DW-LP-19MB

## High-pressure Washer

### Features:

- Performance-approved motor.
- Motor with aluminum casing.
- Commercial grade direct drive brass cylinder ceramic plungers radial direction pump.
- Quick connect nozzles 0°, 15°, 40° and chemical nozzle.
- Pressure adjustable.
- 8.2 Inches wheels.
- In-line water filter.
- Convenient hose and gun hook.
- 5 Meters Cable.
- Plastic cover and protection box.

### Accessories:



Trigger Gun



8 Meter  
Hose



Water  
Inlet Hose

### TECHNICAL DATA

Rated/Max. Pressure	120 Bar
Rated/Max Flow	14L/Min
Motor Power	3000Watt
Revolution	1450 rpm
Volt	AC 220 V
NW/GW	54/56Kg
Carton Size	660x510x450mm



## DW-LP-16MC

## High-pressure Washer

### Features:

- Performance-approved motor.
- Motor with aluminum casing.
- Commercial grade direct drive brass cylinder ceramic plungers radial direction pump.
- Quick connect nozzles 0°, 15°, 40°
- Pressure adjustable.
- 7 Inches wheels.
- Convenient hose and gun hook.
- 5 Meters Cable.
- Plastic cover and protection box.

### Accessories:



Trigger Gun



8 Meter  
Hose



Water  
Inlet Hose

### TECHNICAL DATA

Rated/Max. Pressure	140 Bar
Rated/Max Flow	7.3L/Min
Motor Power	2200Watt
Revolution	2900 rpm
Volt	AC 220 V
NW/GW	33/35.5Kg
Carton Size	580x420x395mm



## DW-LP-19MC

## High-pressure Washer

### Features:

- Performance-approved motor.
- Motor with aluminum casing.
- Commercial grade direct drive brass cylinder ceramic plungers radial direction pump.
- Quick connect nozzles 0° , 15° , 40° and chemical nozzle.
- Pressure adjustable.
- 8.2 Inches wheels.
- In-line water filter.
- Convenient hose and gun hook.
- 5 Meters Cable.
- Plastic cover and protection box.

### Accessories:



Trigger Gun



8 Meter  
Hose



Water  
Inlet Hose

### TECHNICAL DATA

Rated/Max. Pressure	170 Bar
Rated/Max Flow	14L/Min
Motor Power	4000Watt
Revolution	1450 rpm
Volt	AC 380 V
NW/GW	55/57Kg
Carton Size	660x510x450mm



## DW-LP-19ME

## High-pressure Washer

### Features:

- Performance-approved motor.
- Motor with aluminum casing.
- Commercial grade direct drive brass cylinder ceramic plungers radial direction pump.
- Quick connect nozzles 0° , 15° , 40° and chemical nozzle.
- Pressure adjustable.
- 8.2 Inches wheels.
- In-line water filter.
- Convenient hose and gun hook.
- 5 Meters Cable.
- Plastic cover and protection box.

### Accessories:



Trigger Gun



8 Meter  
Hose



Water  
Inlet Hose

### TECHNICAL DATA

Rated/Max. Pressure	180 Bar
Rated/Max Flow	10.7L/Min
Motor Power	3700Watt
Revolution	2900 rpm
Volt	AC 220 V
NW/GW	55/57Kg
Carton Size	660x510x450mm



## DW-LP-19MF

## High-pressure Washer

### Features:

- Performance-approved motor.
- Motor with aluminum casing.
- Commercial grade direct drive brass cylinder ceramic plungers radial direction pump.
- Quick connect nozzles 0° , 15° , 40° and chemical nozzle.
- Pressure adjustable.
- 8.2 Inches wheels.
- In-line water filter.
- Convenient hose and gun hook.
- 5 Meters Cable.
- Plastic cover and protection box.

### Accessories:



Trigger Gun



8 Meter  
Hose



Water  
Inlet Hose

### TECHNICAL DATA

Rated/Max. Pressure	206 Bar
Rated/Max Flow	12.3L/Min
Motor Power	4000Watt
Revolution	2900 rpm
Volt	AC 380 V
NW/GW	55/57Kg
Carton Size	660x510x450mm



## DW-LP-20MA

## High-pressure Washer

### Features:

- Performance-approved motor.
- Motor with aluminum casing.
- Commercial grade direct drive brass cylinder ceramic plungers radial direction pump.
- Quick connect nozzles 0° , 15° , 40° and chemical nozzle.
- Pressure adjustable.
- 10 Inches wheels.
- In-line water filter.
- Convenient hose and gun hook.
- 5 Meters Cable.
- Plastic cover and protection box.

### Accessories:



Trigger Gun



8 Meter  
Hose



Water  
Inlet Hose

### TECHNICAL DATA

Rated/Max. Pressure	248 Bar
Rated/Max Flow	11L/Min
Motor Power	5500Watt
Revolution	1450 rpm
Volt	AC 380 V
NW/GW	83.8/85.8Kg
Carton Size	790x580x525mm



## DW-LP-20MC

## High-pressure Washer

### Features:

- Performance-approved motor.
- Motor with aluminum casing.
- Commercial grade direct drive brass cylinder ceramic plungers radial direction pump.
- Quick connect nozzles 0° , 15° , 40° and chemical nozzle.
- Pressure adjustable.
- 10 Inches wheels.
- In-line water filter.
- Convenient hose and gun hook.
- 5 Meters Cable.
- Plastic cover and protection box.

### Accessories:



Trigger Gun



8 Meter  
Hose



Water  
Inlet Hose

### TECHNICAL DATA

Rated/Max. Pressure	248 Bar
Rated/Max Flow	16L/Min
Motor Power	7500Watt
Revolution	1450 rpm
Volt	AC 380 V
NW/GW	83.8/85.8Kg
Carton Size	790x580x525mm





## DW-HP1310-S2

## High pressure Washer - Pulley

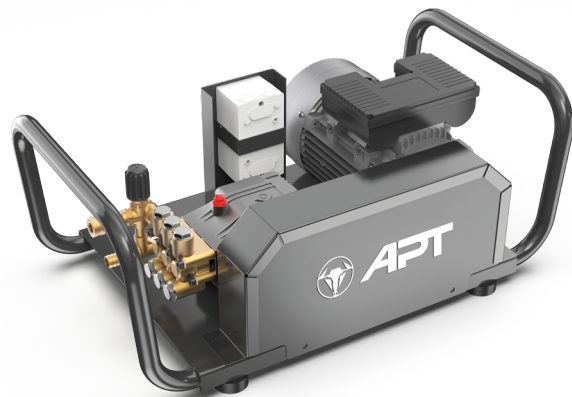
### Features:

- Forged brass cylinder.
- Ceramic plungers.
- Anodized crankcase.
- German parker water seal.
- Built in self suction unloader.
- Pressure adjustable.
- 10 meters Hose.
- Control box
- Power cord
- Four different angel nozzles



Bypass

### Accessories:



### TECHNICAL DATA

Rated/Max. Pressure	130 Bar
Rated/Max Flow	10L/min
Pump / Motor Power	3 HP/2200 Watt
Revolution	1450 rpm
Volt/Freq.	220V/50Hz

#### Gun Technical Data

Max. Pressure	350Bar
Fitting	3/8QC
Max. Temp.	60°C

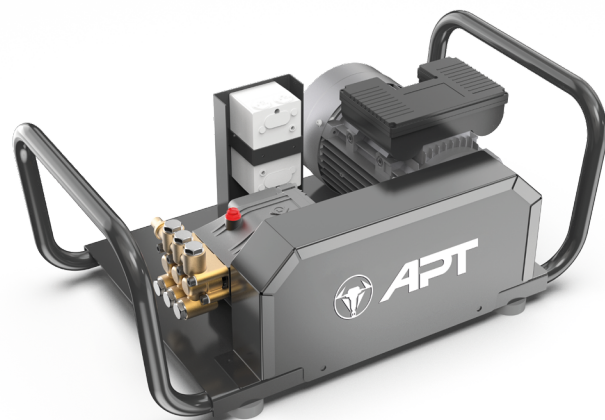
## DW-HP1310-S1

## High pressure Washer - Pulley

### Features:

- Forged brass cylinder.
- Ceramic plungers.
- Anodized crankcase.
- German parker water seal.
- Built in self suction unloader.
- Pressure adjustable.
- 10 meters Hose.
- Control box
- Power cord
- Four different angel nozzles

### Accessories:



### TECHNICAL DATA

Rated/Max. Pressure	130 Bar
Rated/Max Flow	10L/min
Pump / Motor Power	3 HP/2200 Watt
Revolution	1450 rpm
Volt/Freq.	220V/50Hz

#### Gun Technical Data

Max. Pressure	280Bar
Fitting	M14x1.54
Max. Temp.	60°C

**DW-HP1310-S4**
**High pressure Washer - Direct**
**Features:**

- Forged brass cylinder.
- Ceramic plungers.
- Anodized crankcase.
- German parker water seal.
- Built in self suction unloader.
- Pressure adjustable.
- 10 meters Hose.
- Control box
- Power cord
- Four different angel nozzles


**Bypass**
**Accessories:**

**TECHNICAL DATA**

Rated/Max. Pressure	130 Bar
Rated/Max Flow	10L/min
Pump / Motor Power	3 HP/2200 Watt
Revolution	1450 rpm
Volt/Freq.	220V/50Hz


**Gun Technical Data**

Max. Pressure	350Bar
Fitting	3/8QC
Max. Temp.	60°C

**DW-HP1310-S3**
**High pressure Washer - Direct**
**Features:**

- Forged brass cylinder.
- Ceramic plungers.
- Anodized crankcase.
- German parker water seal.
- Built in self suction unloader.
- Pressure adjustable.
- 10 meters Hose.
- Control box
- Power cord
- Four different angel nozzles

**Accessories:**

**TECHNICAL DATA**

Rated/Max. Pressure	130 Bar
Rated/Max Flow	10L/min
Pump / Motor Power	3 HP/2200 Watt
Revolution	1450 rpm
Volt/Freq.	220V/50Hz


**Gun Technical Data**

Max. Pressure	280Bar
Fitting	M14x1.54
Max. Temp.	60°C

## DW-HP140-S2

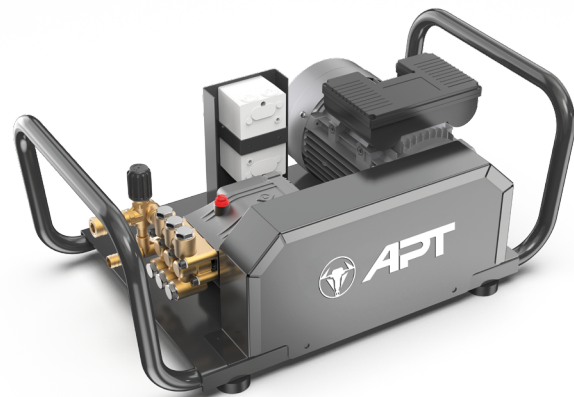
## High pressure Washer - Pulley

### Features:

- Forged brass cylinder.
- Ceramic plungers.
- Anodized crankcase.
- German parker water seal.
- Built in self suction unloader.
- Pressure adjustable.
- 10 meters Hose.
- Control box
- Power cord
- Four different angel nozzles



Bypass



### Accessories:



### TECHNICAL DATA

Rated/Max. Pressure	140 Bar
Rated/Max Flow	12L/min
Pump / Motor Power	4 HP/3000 Watt
Revolution	1450 rpm
Volt/Freq.	220V/50Hz

#### Gun Technical Data

Max. Pressure	350Bar
Fitting	3/8QC
Max. Temp.	60°C

## DW-HP140-S1

## High pressure Washer - Pulley

### Features:

- Forged brass cylinder.
- Ceramic plungers.
- Anodized crankcase.
- German parker water seal.
- Built in self suction unloader.
- Pressure adjustable.
- 10 meters Hose.
- Control box
- Power cord
- Four different angel nozzles

### Accessories:

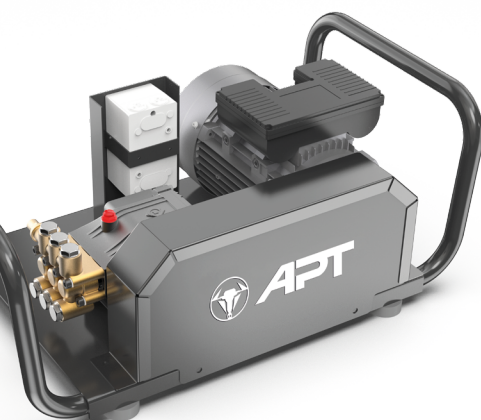


### TECHNICAL DATA

Rated/Max. Pressure	140 Bar
Rated/Max Flow	12L/min
Pump / Motor Power	4 HP/3000 Watt
Revolution	1450 rpm
Volt/Freq.	220V/50Hz

#### Gun Technical Data

Max. Pressure	280Bar
Fitting	M14x1.54
Max. Temp.	60°C



**DW-HP140-S4**
**High pressure Washer - Direct**
**Features:**

- Forged brass cylinder.
- Ceramic plungers.
- Anodized crankcase.
- German parker water seal.
- Built in self suction unloader.
- Pressure adjustable.
- 10 meters Hose.
- Control box
- Power cord
- Four different angel nozzles


**Bypass**
**Accessories:**

**TECHNICAL DATA**

Rated/Max. Pressure	140 Bar
Rated/Max Flow	12L/min
Pump / Motor Power	4 HP/3000 Watt
Revolution	1450 rpm
Volt/Freq.	220V/50Hz


**Gun Technical Data**

Max. Pressure	350Bar
Fitting	3/8QC
Max. Temp.	60°C

**DW-HP140-S3**
**High pressure Washer - Direct**
**Features:**

- Forged brass cylinder.
- Ceramic plungers.
- Anodized crankcase.
- German parker water seal.
- Built in self suction unloader.
- Pressure adjustable.
- 10 meters Hose.
- Control box
- Power cord
- Four different angel nozzles

**Accessories:**

**TECHNICAL DATA**

Rated/Max. Pressure	140 Bar
Rated/Max Flow	12L/min
Pump / Motor Power	4 HP/3000 Watt
Revolution	1450 rpm
Volt/Freq.	220V/50Hz


**Gun Technical Data**

Max. Pressure	280Bar
Fitting	M14x1.54
Max. Temp.	60°C



## DW-HP151-S2

## High pressure Washer - Pulley

### Features:

- Forged brass cylinder.
- Ceramic plungers.
- Anodized crankcase.
- German parker water seal.
- 10 meters Hose.
- Control box
- Power cord
- Four different angel nozzles



Bypass

### Accessories:



### TECHNICAL DATA

Rated/Max. Pressure	150 Bar
Rated/Max Flow	15L/min
Pump / Motor Power	5.5 HP/4000 Watt
Revolution	1450 rpm
Volt/Freq.	220V/50Hz



### Gun Technical Data

Max. Pressure	350Bar
Fitting	3/8QC
Max. Temp.	60°C

## DW-HP151-S1

## High pressure Washer - Pulley

### Features:

- Forged brass cylinder.
- Ceramic plungers.
- Anodized crankcase.
- German parker water seal.
- 10 meters Hose.
- Control box
- Power cord
- Four different angel nozzles

### Accessories:



### TECHNICAL DATA

Rated/Max. Pressure	150 Bar
Rated/Max Flow	15L/min
Pump / Motor Power	5.5 HP/4000 Watt
Revolution	1450 rpm
Volt/Freq.	220V/50Hz

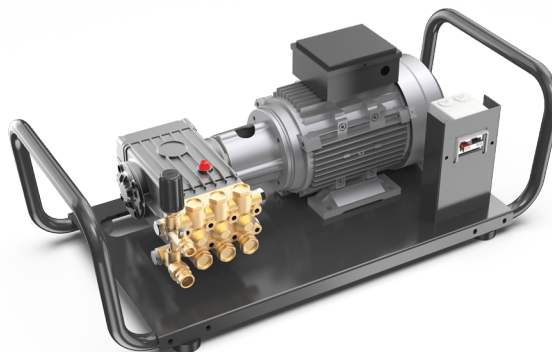


### Gun Technical Data

Max. Pressure	280Bar
Fitting	M14x1.54
Max. Temp.	60°C

**DW-HP151-S4**
**High pressure Washer - Direct**
**Features:**

- Forged brass cylinder.
- Ceramic plungers.
- Anodized crankcase.
- German parker water seal.
- 10 meters Hose.
- Control box
- Power cord
- Four different angel nozzles


**Bypass**

**Accessories:**

**TECHNICAL DATA**

Rated/Max. Pressure	150 Bar
Rated/Max Flow	15L/min
Pump / Motor Power	5.5 HP/4000 Watt
Revolution	1450 rpm
Volt/Freq.	220V/50Hz

**Gun Technical Data**

Max. Pressure	350Bar
Fitting	3/8QC
Max. Temp.	60°C

**DW-HP151-S3**
**High pressure Washer - Direct**
**Features:**

- Forged brass cylinder.
- Ceramic plungers.
- Anodized crankcase.
- German parker water seal.
- 10 meters Hose.
- Control box
- Power cord
- Four different angel nozzles

**Accessories:**

**TECHNICAL DATA**

Rated/Max. Pressure	150 Bar
Rated/Max Flow	15L/min
Pump / Motor Power	5.5 HP/4000 Watt
Revolution	1450 rpm
Volt/Freq.	220V/50Hz

**Gun Technical Data**

Max. Pressure	280Bar
Fitting	M14x1.54
Max. Temp.	60°C

## DW-HP201-S2

## High pressure Washer - Pulley

### Features:

- Forged brass cylinder.
- Ceramic plungers.
- Anodized crankcase.
- German parker water seal.
- 10 meters Hose.
- Control box
- Power cord
- Four different angel nozzles



Bypass

### Accessories:



### TECHNICAL DATA

Rated/Max. Pressure	200 Bar
Rated/Max Flow	15L/min
Pump / Motor Power	7.5 HP/5500 Watt
Revolution	1450 rpm
Volt/Freq.	380V/50Hz



### Gun Technical Data

Max. Pressure	350Bar
Fitting	3/8QC
Max. Temp.	60°C

## DW-HP201-S1

## High pressure Washer - Pulley

### Features:

- Forged brass cylinder.
- Ceramic plungers.
- Anodized crankcase.
- German parker water seal.
- 10 meters Hose.
- Control box
- Power cord
- Four different angel nozzles

### Accessories:



### TECHNICAL DATA

Rated/Max. Pressure	200 Bar
Rated/Max Flow	15L/min
Pump / Motor Power	7.5 HP/5500 Watt
Revolution	1450 rpm
Volt/Freq.	380V/50Hz

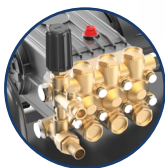
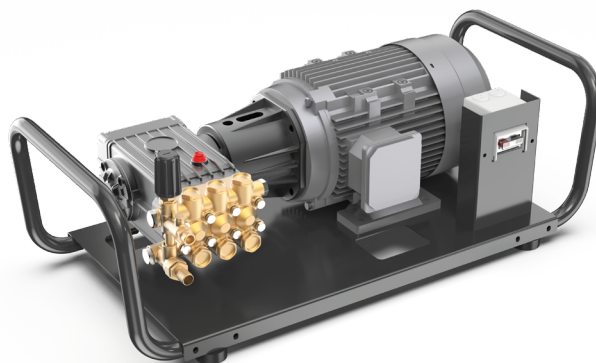


### Gun Technical Data

Max. Pressure	280Bar
Fitting	M14x1.54
Max. Temp.	60°C

**DW-HP201-S4**
**High pressure Washer - Direct**
**Features:**

- Forged brass cylinder.
- Ceramic plungers.
- Anodized crankcase.
- German parker water seal.
- 10 meters Hose.
- Control box
- Power cord
- Four different angel nozzles


**Bypass**

**Accessories:**

**TECHNICAL DATA**

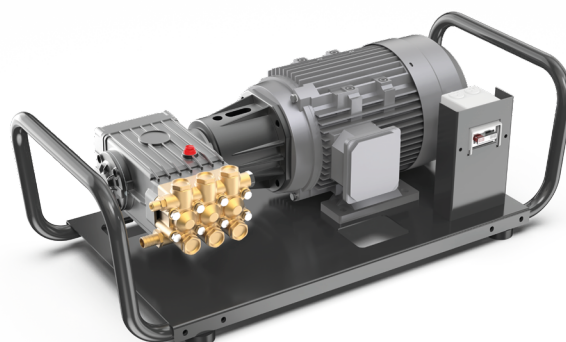
Rated/Max. Pressure	200 Bar
Rated/Max Flow	15L/min
Pump / Motor Power	7.5 HP/5500 Watt
Revolution	1450 rpm
Volt/Freq.	380V/50Hz

**Gun Technical Data**

Max. Pressure	350Bar
Fitting	3/8QC
Max. Temp.	60°C

**DW-HP201-S3**
**High pressure Washer - Direct**
**Features:**

- Forged brass cylinder.
- Ceramic plungers.
- Anodized crankcase.
- German parker water seal.
- 10 meters Hose.
- Control box
- Power cord
- Four different angel nozzles


**Accessories:**

**TECHNICAL DATA**

Rated/Max. Pressure	200 Bar
Rated/Max Flow	15L/min
Pump / Motor Power	7.5 HP/5500 Watt
Revolution	1450 rpm
Volt/Freq.	380V/50Hz

**Gun Technical Data**

Max. Pressure	280Bar
Fitting	M14x1.54
Max. Temp.	60°C



## DW-HP202-S2

### High pressure Washer - Pulley

#### Features:

- Forged brass cylinder.
- Ceramic plungers.
- Anodized crankcase.
- German parker water seal.
- 10 meters Hose.
- Control box
- Power cord
- Four different angel nozzles



Bypass

#### Accessories:



#### TECHNICAL DATA

Rated/Max. Pressure	200 Bar
Rated/Max Flow	21L/min
Pump / Motor Power	10 HP/7500 Watt
Revolution	1450 rpm
Volt/Freq.	380V/50Hz



#### Gun Technical Data

Max. Pressure	350Bar
Fitting	3/8QC
Max. Temp.	60°C

## DW-HP202-S1

### High pressure Washer - Pulley

#### Features:

- Forged brass cylinder.
- Ceramic plungers.
- Anodized crankcase.
- German parker water seal.
- 10 meters Hose.
- Control box
- Power cord
- Four different angel nozzles

#### Accessories:



#### TECHNICAL DATA

Rated/Max. Pressure	200 Bar
Rated/Max Flow	21L/min
Pump / Motor Power	10 HP/7500 Watt
Revolution	1450 rpm
Volt/Freq.	380V/50Hz

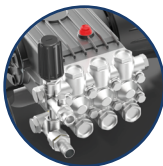
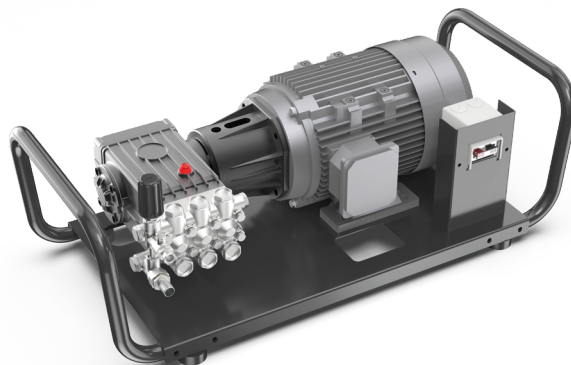


#### Gun Technical Data

Max. Pressure	280Bar
Fitting	M14x1.54
Max. Temp.	60°C

**DW-HP202-S4**
**High pressure Washer - Direct**
**Features:**

- Forged brass cylinder.
- Ceramic plungers.
- Anodized crankcase.
- German parker water seal.
- 10 meters Hose.
- Control box
- Power cord
- Four different angel nozzles


**Bypass**

**Accessories:**

**TECHNICAL DATA**

Rated/Max. Pressure	200 Bar
Rated/Max Flow	21L/min
Pump / Motor Power	10 HP/7500 Watt
Revolution	1450 rpm
Volt/Freq.	380V/50Hz

**Gun Technical Data**

Max. Pressure	350Bar
Fitting	3/8QC
Max. Temp.	60°C

**DW-HP202-S3**
**High pressure Washer - Direct**
**Features:**

- Forged brass cylinder.
- Ceramic plungers.
- Anodized crankcase.
- German parker water seal.
- 10 meters Hose.
- Control box
- Power cord
- Four different angel nozzles

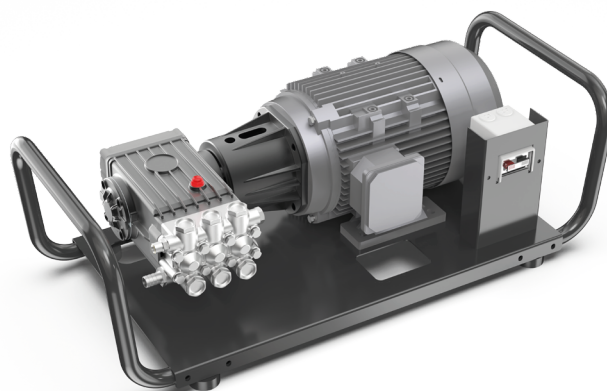
**Accessories:**

**TECHNICAL DATA**

Rated/Max. Pressure	200 Bar
Rated/Max Flow	21L/min
Pump / Motor Power	10 HP/7500 Watt
Revolution	1450 rpm
Volt/Freq.	380V/50Hz

**Gun Technical Data**

Max. Pressure	280Bar
Fitting	M14x1.54
Max. Temp.	60°C

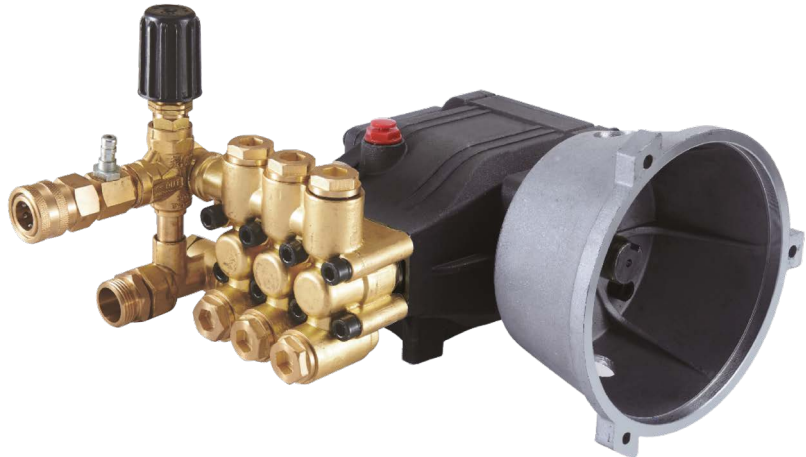


## DW-HP140

## High pressure Pump

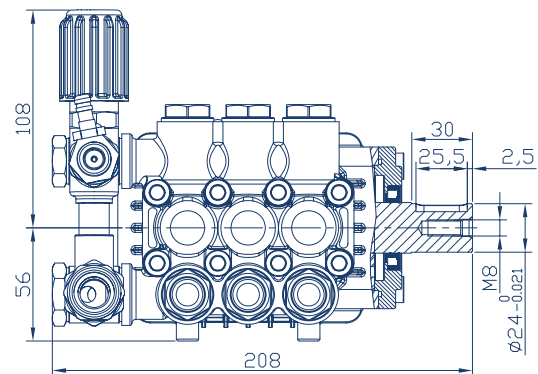
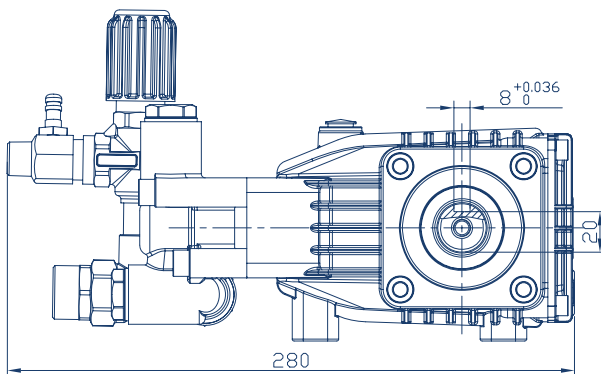
### Features:

- Forged brass cylinder.
- Anodized crankcase.
- Ceramic Plungers.
- German parker water seal.
- Fixed rate chemical injector.
- Built-in self suction unloader.
- Pressure adjustable.



### TECHNICAL DATA

Rated/Max. Pressure	140 Bar
Rated/Max Flow	12L/min
Pump / Motor Power	4 HP/3000 Watt
Revolution	1450 rpm
Volt/Freq.	220V/50Hz

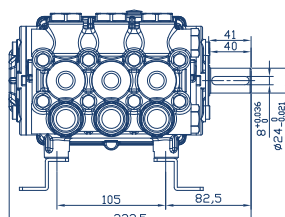
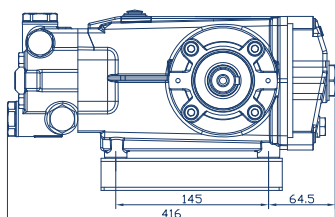


## DW-HP151

## High pressure Pump

### Features:

- Forged brass cylinder.
- Anodized crankcase.
- Ceramic plungers.
- German parker water seal.



### TECHNICAL DATA

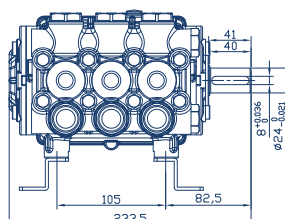
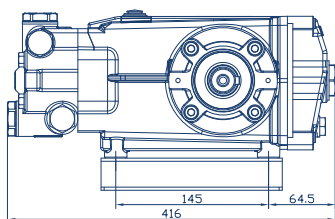
Rated/Max. Pressure	150 Bar
Rated/Max Flow	15L/min
Pump / Motor Power	5.5 HP/4000 Watt
Revolution	1450 rpm
Volt/Freq.	220V/50Hz

## DW-HP201/DW-HP202

## High pressure Pump

### Features:

- Forged brass cylinder.
- Anodized crankcase.
- Ceramic plungers.
- German parker water seal.

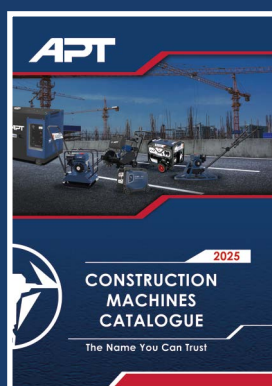
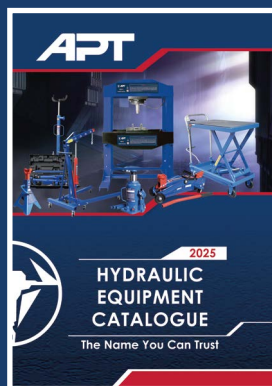


### TECHNICAL DATA

	DW-HP201	DW-HP202
Rated/Max. Pressure	200 Bar	200 Bar
Rated/Max Flow	15L/min	21L/min
Pump / Motor Power	7.5 HP/5500 Watt	10 HP/7500 Watt
Revolution	1450 rpm	1450 rpm
Volt/Freq.	350V/50Hz	350V/50Hz



# Check Our Range



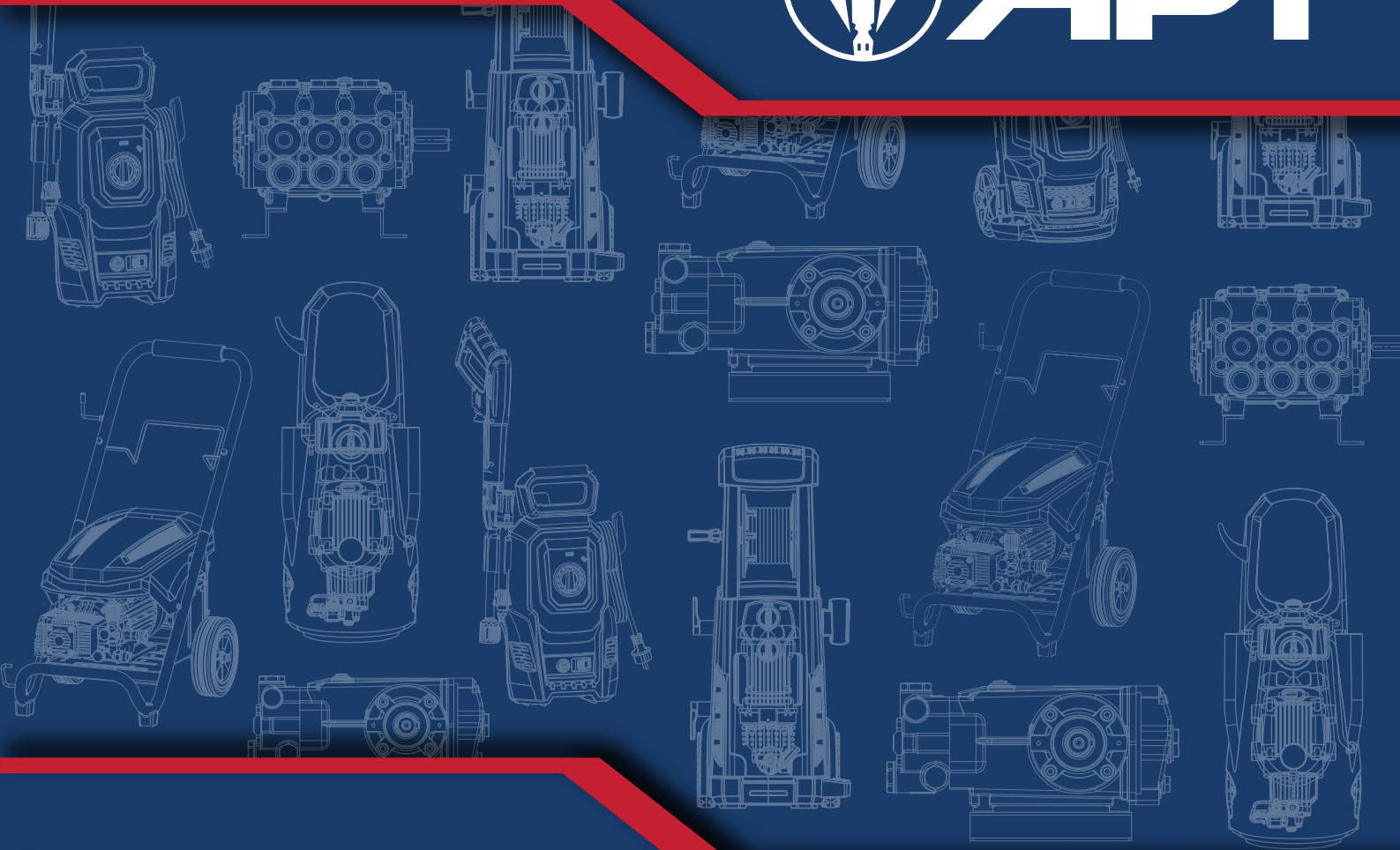
# APT

The Name You Can Trust





# APT



## Contact Us



[Info@apt-international.com](mailto:Info@apt-international.com)

