



# APT



## ***AUTOMOTIVE BROCHURE***

The Name You Can Trust  
[www.apr-international.com](http://www.apr-international.com)

# TYRE CHANGER

SEMI-AUTOMATIC  
/AUTOMATIC



## U-201 SEMI-AUTOMATIC SWING ARM

### FEATURES



Adopt rugged & durable one-piece casting jaws.

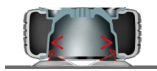


Adjustable pressing shovel helps to press tyre with less effort.

### PARAMETERS



10~21"  
External clamping



12~24"  
Internal clamping

## U-221 / U-226 AUTOMATIC CHANGER TILTING TYPE

### FEATURES



Adopt rugged & durable one-piece casting jaws.



Tilt back tower design  
The pneumatic vertical arm automatically positions the mounting head on rim.



<1000mm(39")  
Max. wheel diameter



<355mm(14")  
Max. wheel width



## U-650 FULLY-AUTOMATIC LEVERLESS TYRE CHANGER

### FEATURES



Movable control console for comfortable operation.  
The equipment is equipped with intelligent control system, fully automatic tyre removal by simply entering type parameters. The whole process can be done without human intervention. Support both manual and automatic operation modes, available to switch at any time in the process of tyre removal and installation. In manual mode, it only requires to manually operate the buttons to complete the tyre mounting and demounting.



AUTOMATIC MOUNTING/  
DEMOUNTING DEVICE

Equipped with a high-fidelity camera system and LCD screen, the whole operation is under control and no longer have a blind spot to demount the tyre.

## U-650 PARAMETERS



13~28"  
Rim dimension



<1040mm(41")  
Max. wheel diameter



<355mm(14")  
Max. wheel width



Leverless

## U-650F

Semi-automatic



PNEUMATIC  
HELP ARM  
360° rotatable, offering extra assistance for bead pressing and tyre mounting.



3 in 1 tool head, including: leverless mount/demount head, bead pressing roller and bead pressing disc.

Hydraulic lifting disc also provides a powerful force to separate the lower bead and rim quickly.



INTEGRATED SPINDLE  
WHEEL LIFT

With centre post turntable which can be flipped 90 degrees to make loading and unloading tyres easier.



HYDRAULIC BEAD  
BREAKER  
Remove tyre easily and efficiently from the rim.

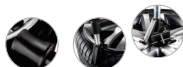
# U-256 FULLY-AUTOMATIC CHANGER TILTING TYPE

# TYRE CHANGER

## FEATURES



### 056 Help Arm



Quick clamping with central positioning function.  
Nylon bead roller leaves no mark on rim and  
Providing an easy Tyre changing operation  
The labor-saving 360° moving bead pressing  
block providing an easier unloading.



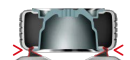
### T03 Leverless Tool Head (Optional)



Leverless:  
performing the tyre mounting / demounting  
operation without use of the traditional  
tyre lever

Standard configuration: Bead pressing  
tool

## PARAMETERS



12~23"  
External clamping



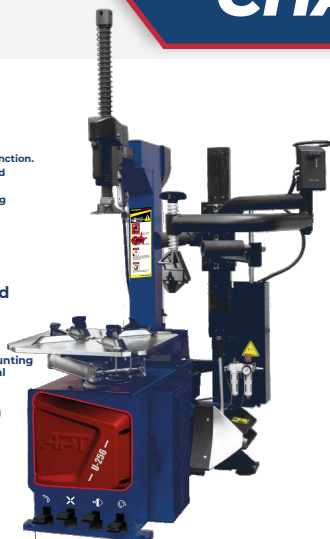
14~26"  
Internal clamping



<1143mm(45")  
Max.wheel diameter



<406mm(16")  
Max. wheel width



## About 256 Series

U256T



U256A



U256AT



## OPTIONAL CONFIGURATION

Option 1:  
Barrel-type Tyre  
Inflator Blaster



UB-TFI  
Installed on  
tyre changer

U-256-TFI

Option 2:  
Traditional quick  
air booster



Pressure  
gauge



Quick air  
booster tank

U-256A

Optional:  
Barrel-type Tyre Inflator Blaster



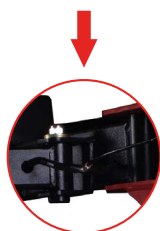
UB-TF2  
Individual  
Type



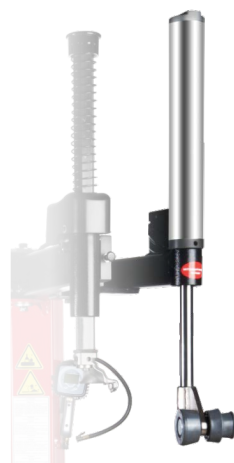
UB-TFM  
Mobile &  
Individual Type

## X005467 TYRE CHANGER HELPER ARM

The Old help arm:  
It used to be changed the single  
function swing arm to a swing  
arm with Helper assembly when  
customers need to upgrade  
the machine.



The NEW help arm:  
It requires to simply add  
the helper arm with a U-shaped  
bolt to the swing arm.



Convenient to upgrade  
all our swing arms

# WHEEL BALANCER

## U-520 WHEEL BALANCER BASIC LINE

Noise level  
70dB

LED light &  
Digital display

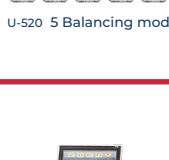
① Self-calibration and self-diagnosis functions.

② Automatic distance and wheel diameter measuring, allowing faster data input.

Adding tracking sticky balancing mode, special for high-class wheel uses stick-on weights only



U-500 6 Balancing modes



U-520 5 Balancing modes



U-520  
Split and hidden  
weight solution



Opt function



Maximum  
wheel weight



Rim width  
Rim diameter



### ELECTROMAGNETIC BRAKE

The electromagnetic brake function can automatically position the inner and outer unbalanced position.



### AUTOMATIC POSITIONING OF UNBALANCE POINTS

The machine comes with an automatic positioning feature that detects the unbalanced point, eliminating the need for manual hand-spinning of the tyre.



### LASER POINTER

Point out the unbalancing place with laser automatically

## U-828 WHEEL BALANCER

### AUTOMATIC MEASUREMENT



Automatic distance and wheel diameter measuring, allowing faster data input



The tracking sticking balancing mode is particularly suitable for high-class wheel uses stick-on weights only.



Automatic width measuring scale.



6 Balancing modes



Split and hidden  
weight solution



Opt function



Maximum  
wheel weight



Rim width  
Rim diameter

# W2 WHEEL BALANCER

Noise level  
70dB



## FEATURES

- ① Automatic distance and wheel diameter measuring, allowing faster data input adding tracking sticky balancing mode, special for high-class wheel uses stick-on weights only.
- ② Automatic width measuring scale.



9 Balancing modes



Split and hidden weightsolution



Opt function



**65kg**  
(143 lbs)

Maximum wheel weight



Rim width  
Rim diameter

# W3 Wheel Balancer With autolocate

## Optional:

Automatic Disc Brake



Laser Pointer



AUTOMATIC POSITIONING  
OF UNBALANCE POINTS



3D ANIMATION  
INTERFACE



9 Balancing modes



Split and hidden weightsolution



Opt function

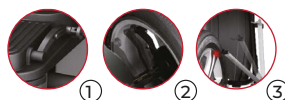


**65kg**  
(143 lbs)

Maximum wheel weight



Rim width  
Rim diameter



## FEATURES:

- ① Automatic distance and wheel diameter measuring, allowing faster data input
- ② Adding tracking sticky balancing mode, special for high-class wheel uses stick-on weights only.
- ③ Automatic width measuring scale.





# WHEEL ALIGNMENT

## PL-3D-5555 3D WHEEL ALIGNMENT



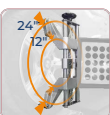
Accuracy calculates the entire vehicle angle by two high precision cameras

Four Targets  
No electronic components;  
No sensors;  
Pretty low break-down rate;



Rubber pads ensure a flat surface for wheels

Special wheel clamps auto compensation and auto measurement



Reference 3D virtual plane for measuring the vehicle, faster and more accurate



Target board adjustment



Measurement data



Dynamic measurement



### Standard parts



Steering wheel holder



Special wheel clamps  
Auto compensation  
auto measurement



Auto-tracking camera  
system  
Provide real-time & high  
precision 3D measurements



Targets  
No electronic  
components with high  
accuracy

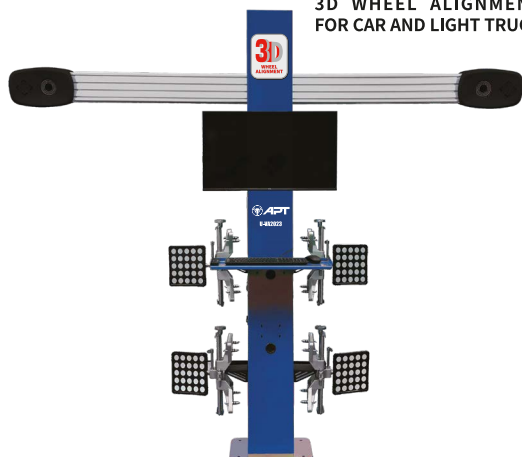


Lenovo (IBM) Computer  
19" LCD monitor



One Key  
Recovery & Update  
One key restore, backup  
or update the system  
automatically.

### 3D WHEEL ALIGNMENT FOR CAR AND LIGHT TRUCK



## U-VA2023 3D WHEEL ALIGNMENT

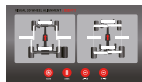
Intuitive real-time data  
comparison with standards



Industrial-grade hd camera, total  
vehicle & platform coverage



Precision wheelbase & track  
detection



Rugged fiberglass targets, speed,  
stable, strong



Engine frame adjustment at  
your fingertips

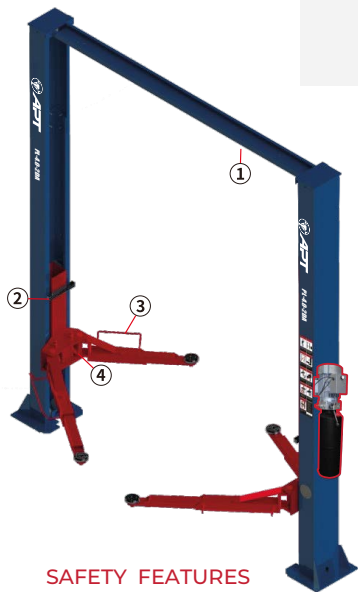


In-house software with rich vehicle  
data, free upgrades

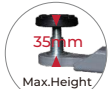


# PL-4.0-2DA TWO POST VEHICLE LIFT ARCH TYPE CLEAR FLOOR

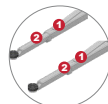
# TWO POST VEHICLE Lifts



## STANDARD



Adjustable lifting pad to two(2) heights



Two stage arm

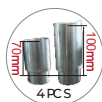
## OPTIONAL



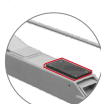
Longer two stage arm & three-stage arm



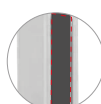
Height limit switch



Adapters



Arm pad



Dust protection



Simple control box

## SAFETY FEATURES



Top beam design



Car door protection  
(Standard PL-4.0-2DE)



Foot Protection Device



Automatic all-steel arm-locking device



Safety valve for anti-explosion of hydraulic system



Chain protector

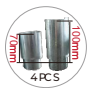
# PL-4.0-2D / PL-4.0-2DE TWO POST VEHICLE LIFT ARCH TYPE CLEAR FLOOR



## OPTIONAL



Longer two stage arm & three-stage arm



Adapters



Arm pad

## STANDARD



Adjustable lifting pad to two(2) heights



Two stage arm

## SAFETY FEATURES



Car door protection  
(Standard PL-4.0-2DE)



Foot Protection Device



Automatic all-steel arm-locking device



Safety valve for anti-explosion of hydraulic system



Chain protector



# FOUR POST VEHICLE Lifts

## PL-FS35/FS40/FS55 FOUR POST VEHICLE LIFT FOR WHEEL ALIGNMENT

3.5  
4.0



Single Manual  
Lock Release



For Wheel  
Alignment



Optional Pneumatic  
Lock Release  
(Available as PL-FS40E)

### Rolling jack(OPTIONAL) 2T

Convenient for clients' self-installation



Manual Control



Pneumatic Control

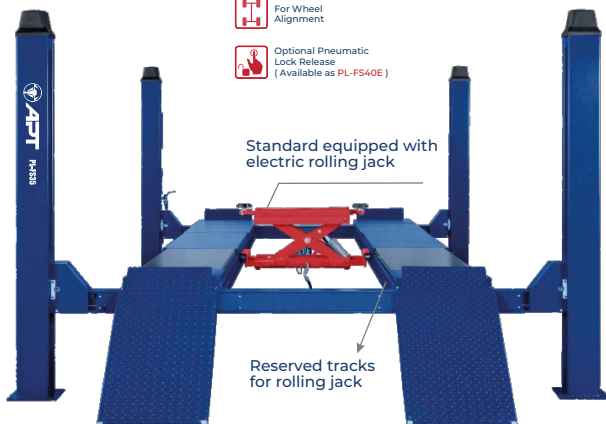
### OPTIONAL



Position-adjustable



Drive-by-wire button



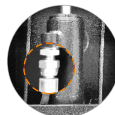
Standard equipped with  
electric rolling jack

Reserved tracks  
for rolling jack

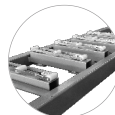
### SAFETY FEATURES



Big Pulley for  
steel rope



Safety valve for  
anti-explosion of  
hydraulic system



Abrasion resistant  
slip plates for 4  
wheel alignment



Equipped with main  
insurance and rope  
break insurance on  
each column



Power unit cover +  
chain protector for oil  
hose

## U-F50/F55 Four post lift Manual Lock Release

4.0



### Rolling Jack (OPTIONAL)



Manual Control



Pneumatic Control



Electric Control

### OPTIONAL



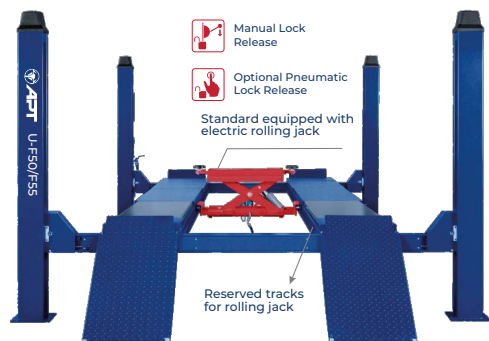
Position-adjustable



Drive-by-wire button



Power unit cover +  
chain protector for oil  
hose



Manual Lock  
Release



Optional Pneumatic  
Lock Release

Standard equipped with  
electric rolling jack

Reserved tracks  
for rolling jack

### SAFETY FEATURES



Big Pulley for  
steel rope



Safety valve for  
anti-explosion of  
hydraulic system



Equipped with main insurance and rope  
break insurance on each column



## PL-H30M SMALL PLATFORM PANTOGRAPH LIFT

# PANTOGRAPH LIFTS



2.5 |



No ditch  
needed



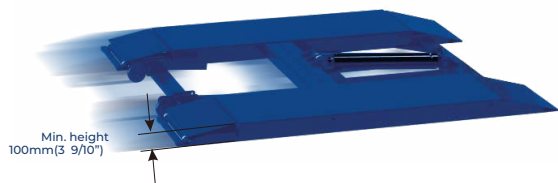
Automatic  
Release



Manual  
lowering



ULTRA  
-THIN



### FEATURES



Parallel structure  
design



Safety valve for  
anti-explosion of  
hydraulic system

## U-H25A PORTABLE VEHICLE LIFT



2.5 |



No ditch  
needed



Automatic  
Release



Manual  
lowering



ULTRA  
-THIN



# SCISSOR Lift

## PL-B30 ULTRA-THIN WHEEL FREE SCISSOR LIFT



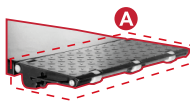
No ditch  
needed



Pneumatic Lock  
Release



Electromagnetic  
Lowering



PL-B30+A=PL-B30Y

### OPTIONAL



Drive-by-wire button



Photoelectric leveling



### FEATURES



Precision  
machined  
safety lock



Synchronized  
hydraulic cylinders  
system



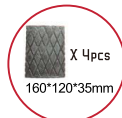
Safety descending  
stop & alarm



Safety valve for  
anti-explosion of  
hydraulic system



Height limit switch



X 4pcs  
160\*120\*35mm

Rubber pads



3.0



No ditch  
needed



Pneumatic Lock  
Release



Electromagnetic  
Lowering

## PL-Z30 MID-RISE SCISSOR LIFT

PL-Z30+A= PL-Z30Y



Allows you to fix the ramp as an  
extendable platform, suits for  
long wheel base vehicles



X 4pcs  
160\*120\*35mm  
Rubber pads

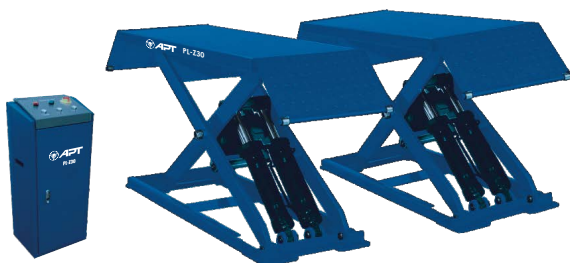
### OPTIONAL



Drive-by-wire button



Photoelectric leveling



### FEATURES



Precision  
machined  
safety lock



Synchronized  
hydraulic cylinders  
system



Safety descending  
stop & alarm



Safety valve for  
anti-explosion of  
hydraulic system



Height limit switch

## U-D45

Double Level Platform Scissors Lift  
4.5T 380V 50HZ For Wheel Alignment



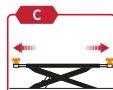
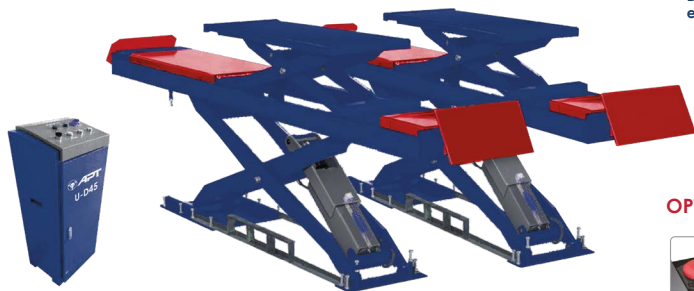
For Wheel  
Alignment



Pneumatic Lock  
Release



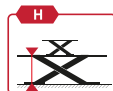
Electromagnetic  
Lowering



Double sided  
extendable



Position adjustable  
SUV adaptors



Heightened

### OPTIONAL



Position-adjustable  
turntable



Photoelectric switch

### FEATURES



Precision machined  
double sided safety  
teeth design



Safety descending  
stop & alarm



Safety valve for  
anti-explosion of  
hydraulic system



Height limit switch  
(jack)



Height limit switch  
(Main platform)



Abrasion resistant  
slip plates for 4  
wheel alignment

## PL-MT07

Motor Cycle Lift



Air Inlet  
1/4" NPT

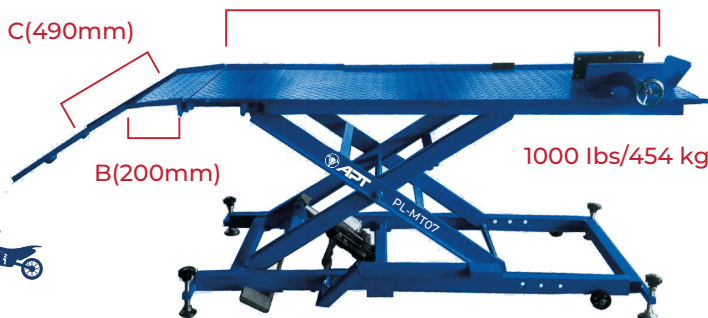
C(490mm)

A (1830mm)

B(200mm)

1000 lbs/454 kg

Applicable for:



# RECHARGING MACHINE

**AC636YF**  
Refrigerant Recovery  
Recharge Machines

## FEATURES



Database



R1234YF

## GENERAL INFORMATION



Suit for



Refrigerant: R1234YF

Mode: fully-automatic

Screen: 3.9" LCD

	Recycling speed	180~350 Gallons/min
	Recharge Speed	800~1500 Gallons/min
	Vacuum Speed	90 L/min
	Refrigerant Tank Capacity	10L
	Refrigerant electronic scale range	0~60 kg
	Oil Bottle Capacity	300 ml
	Operating T °C	5~50 °C
	Voltage	AC 220V 50Hz 1 phase
	Max. Working Pressure	17.5bar
	Electronic Scale Precision	±5 gr



## AC626 A/C REFRIGERANT RECOVERY & RECHARGING MACHINE

### GENERAL INFORMATION



Suit for



Refrigerant: R134a

Mode: fully-automatic

Screen: 3.9" LCD

	Recycling speed	180~350 Gallons/min
	Recharge Speed	800~1500 Gallons/min
	Vacuum Speed	60 L/min
	Refrigerant Tank Capacity	10L
	Refrigerant electronic scale range	0~60 kg
	Oil Bottle Capacity	300 ml
	Operating T °C	5~50 °C
	Voltage	AC 220V 50Hz 1 phase
	Max. Working Pressure	17.5bar
	Electronic Scale Precision	±5 gr

### FEATURES



Database



## HP-1345 NITROGEN MACHINE SEMI AUTOMATIC

# NITROGEN INFLATORS



Power	220V, 50/60 Hz
Nitrogen Purity	95~99%
Air Inlet Pressure	9~10bar (130~145psi)
Air Compressor	5.5~7.5kw-10bar-1~1.5 m³/min
Nitrogen Output Pressure	1~6bar (15~87psi)
Output Capacity	30~50L/min (7.9~13.2gal/min)
N2 Tank Capacity	Internal Tank 50L (13.2gal/min)
Package Size	620x445x1145 mm
N.W/G.W	74kg/77kg

### FEATURES

- Nitrogen generated through high quality filtration.
- Comes with 2 Hoses, Vacuum Generator and N2 Inflator.

## HP-2670A/EN NITROGEN MACHINE AUTOMATIC



Power	220V, 50/60 Hz
Nitrogen Purity	95~99%
Air Inlet Pressure	9~10bar (130~145psi)
Air Compressor	5.5~7.5kw-10bar-1~1.5 m³/min
Nitrogen Output Pressure	1~6bar (15~87psi)
Output Capacity	70~90L/min (13.2~18.5gal/min)
N2 Tank Capacity	Internal Tank 70L (18.5gal/min)
Package Size	730x530x1395 mm
N.W/G.W	105kg/111kg

**Functions:** STC mode/OPS mode/N2P mode/OPS+N2P /  
Manual and Automatic Alarm System





# NITROGEN INFLATORS

## HP-2690A/4FN NITROGEN MACHINE AUTOMATIC



Power	220V, 50/60 Hz
Nitrogen Purity	95~99%
Air Inlet Pressure	9~10bar (130~145psi)
Air Compressor	5.5~7.5kw-10bar-1~1.5 m³/min
Nitrogen Output Pressure	1~6bar (15~87psi)
Output Capacity	70~90L/min (18.5~23.8gal/min)
N2 Tank Capacity	Internal Tank 90L (24gal/min)
Package Size	730x530x1395 mm
N.W/G.W	128kg/136kg



**Functions:** STC mode/OPS mode/N2P mode/OPS+N2P /  
Manual and Automatic Alarm System



## YS-7700/ N1 NITROGEN INFLATOR



Nitrogen purity	95-99%
Inlet Air pressure	10-9 bar / 145-130 psi
Air compressor required	7.5~5.5kw,10bar,1.5~1m3/min
N2 output pressure	6-1bar,87-15psi
Output capacity	70-50L/min 18.5-13.2 gallon/min
N2 tank capacity	70L/18.5 gallon

## HJ931B FULLY AUTOMATIC TYRE INFLATORS

# TYRE INFLATORS



Voltage	AC 220V
Power	Watt 32
Air Inlet Pressure	4-10bar/58-145Psi
Air Outlet Pressure	1-7bar/15-100Psi
Max. Flow Rate	400L/min (10bar)
Inflation Hoses Sizes	Ø13x10m
Inflation Hoses Number	1
Size	L246xW90xH615mm
Filter	max: 10 bar



LED (86×39mm)



Quick nozzle with  
excellent air-tightness  
Flow rate(400l/min, 10bar)



High accuracy  
Inflation



Intelligent warning  
for false alarm



level of waterproof  
/dust-proof:IP54

## HJ951B FULLY AUTOMATIC TYRE INFLATORS

Voltage	AC 220V
Power	Watt 32
Air Inlet Pressure	4-10bar/58-145Psi
Air Outlet Pressure	1-7bar/15-100Psi
Max. Flow Rate	400L/min (10bar)
Inflation Hoses Sizes	Ø13x10m
Inflation Hoses Number	1
Size	L410xW78xH450mm
Filter	max: 10 bar



LCD (130×60mm)



Quick nozzle with  
excellent air-tightness  
Flow rate(400l/min, 10bar)



High accuracy  
Inflation



Intelligent warning  
for false alarm



level of waterproof  
/dust-proof:IP54



# OIL EXTRACTOR

## HD-2380 ELECTRIC OIL EXTRACTOR

Tank Capacity	80L
Power Supply	AC 220V 50/60Hz 1 Phase
Power	≤370 Watt
Oil Ejection Pressure	0.5bar/7Psi
Oil T °C Range	40-60 °C
Suction Speed	1.5-2L/min 0.4-0.5Gallons/min
Modular Cylinder Capacity	9L/2.4Gallons
N.W/G.W	32/35 kg
Dimensions	500x400x1265 mm



## HC-2097 PNEUMATIC OIL EXTRACTOR Basic 20 Series

Tank Capacity	65L
Air Inlet Pressure	6-8bar/87-116Psi
Air Inlet Connection	1/4"
Vacuum Degree	-1~0bar
Air Pressure For Oil Discharge	0.7-1bar/10-15Psi
Oil T °C Range	40-60 °C
"Suction Speed(Probe Dia. Ø8 and Oil at 60 °C)"	6.5L/min 1.72Gallon/min
Modular Cylinder Capacity	9L/2.4Gallon
N.W/G.W	21.3/24.5 kg
Dimensions	270x270x575 mm
Collection Bowl Capacity	16L/4.2Gallon



## Rhine11

Main Voltage(AC)V	1 PH 230
Frequency(Hz)	50/60
Charge Voltage(V)	6-12
InputPower(Kw)	50
Effective Current(A)	4
Average Current(A)	4
InputPower(KW)	2.5
Effective Current(A)	2.5
AverageCurrent(A)	7.5
Dimension(mm)	190×115×185
Weight (Kg)	1.8

## BoostStar BATTERY CHARGER AND BOOSTER

### BoostStar-320

Main Voltage(AC)V	1 PH 230
Frequency(Hz)	50/60
Charge Voltage(V)	12-24
InputPower(Kw)	0.8
Effective Current(A)	30
Average Current(A)	30
InputPower(KW)	6.4
Effective Current(A)	300
AverageCurrent(A)	180
Dimension(mm)	550×270×240
Weight (Kg)	16



# INJECTOR CLEANER MACHINE

## HP-6C Fuel Injector Diagnoses and Cleaning Machine



Power supply	AC220V±10% 50/60HZ
Environment temperature	5~40°C
Relative humidity	<85%
Magnetic intensity	<400A/M
Ultrasonic power	100W
Injector operating frequency	0~7500 rpm variable in 50 rpm
Injector pulse	0~9,900 pulses variable in 100 pulses
Spray time	0~10Min
Pulse width	0~20 ms in 0.1 ms increments
System pressure	0~0.6MPA
Cylinder volume	140ml



With integrated  
ultrasonic bath

## HP-8A Fuel Injector Tester & Cleaner Machine



Power supply	AC220V±10% 50/60HZ
Environment temperature	5~40°C
Relative humidity	<85%
Magnetic intensity	<400A/M
Ultrasonic power	100W
Injector operating frequency	0~9,950 rpm variable in 50 rpm
Injector pulse	0~9,900 pulses variable in 50 pulses
Spray time	0~10Min
Pulse width	0~20 ms in 0.1 ms increments
System pressure	0~0.6MPA
Cylinder volume	120ml
Packing Dimension	590×600×760



# PLUS 100

Chassis suspension abnormal  
sound detection equipment

# DETECTION EQUIPMENT



## PRODUCT FEATURES

- 6-pole variable frequency motor, large output torque, built-in independent fan, good heat dissipation effect
- Industrial frequency converter: 0-200 times/minute range adjustable

## OPTIONAL



Angle-adjustable spotlight.  
Lighting can be adjusted at any  
angle accordingly.

Rotatable V-shaped weight-bearing disk.  
The front wheel can be rotated at any  
angle with the steering wheel.

Input voltage	220V/380V 50-60HZ
Motor power	2.2KW (Variable frequency)
Frequency range	0-50Hz
Lifting height	20 mm
Movement frequency	200 Times/min.
Load capacity	3T
Packing specifications	1250×800×1200 mm 2Pcs
Machine weight	60Kg
Packing weight	710Kg



**TIRE POSITIONING  
PLATE**  
Hot-rolled steel,  
sturdy and durable



**CONTROL PANEL**  
Etching process, not  
easy to rust, elegant  
and beautiful



**STRESS RELIEVER**  
Aviation aluminum  
material, beautiful  
and durable



**ARMRESTS**  
Facilitate machine  
movement and  
improve work  
efficiency



**ADJUSTABLE FEET**  
High load-bearing  
capacity, stable  
machine



**UNIVERSAL CASTERS**  
Adjustable in any  
direction, labor-  
saving and  
convenient capacity,  
stable machine



# AFT

