

APT



2025

POWER TOOLS CATALOGUE



The Name You Can Trust

APT International

About:

With Decades of experience, APT International is a global emerging brand that is determined to lead, with solid experience in Product development, manufacturing, distributing, selling, and servicing world class products. We aspire to become a global brand that is trusted by our customers for our tools, accessories, and equipment.

Believing that to build a great tool you need great materials is the driver of our manufacturing process, and for that we source the absolute best raw materials and components to build the most powerful and efficient tool for our customers to rely on.

We put our customers at the heart of everything we do, and we make sure that our wide range of products is available for them in every market we enter through a strong network of central distribution centers, local distributors, and retailers. Complemented with a vast network of service centers equipped with highly qualified technicians delivering a world class customer service quality to ensure our customers complete satisfaction.

Our Values:

Reliability: Our tools are built to last, for our customers to trust that they will consistently deliver the same quality every time.

Quality: We have a passionate commitment to providing high quality tools that exceed our customers' expectations.

Value for Money: Our advanced production capabilities enable us to offer our customers an unmatched combination of reliability, quality & price.

Innovation: We continuously strive to bring innovative solutions, for our customers to have the tools they need to get the job done.

Customer Focus: Our customers are at the heart of everything we do, we listen to their needs and work to deliver what they desire.

TOOL FEATURES ICONS

	Variable No-load Speed Tool motor provides variable speeds for application versatility		Speed Control Function
	Torque Setting		Restart Protection Function
	Chuck Capacity		No Vibration
	Electric Brake		Disc Diameter
	Drilling /Fastening Function		Spindle Lock
	Reversible Direction Reverses the rotation direction for screw fastening and to help removing the drill bit if it stuck		Suction Capacity
	Active Torque Control		Water Level
	Hammering Function		Orbital Action
	Drilling / Impact Drilling Function		T-Shank
	Drilling / Hammering / Chiseling Function		Bevel Capacity
	Impact Drilling / Chiseling Function		Wood Material
	Impact Energy		Metal Material
	Soft Grip Rubber handle soft grip for comfortable use		Blade Diameter
	Anti-dust ventilation system		LED Light
	Anvil Size		TYPE-C Charging Port
	Socket Size		Battery Count
	Thread /Spindle Size		Tool without Battery

TOOL FEATURES ICONS

	High Capacity		Heat dissipation system
	Battery Cell Count		Recommended breaking directions
	Battery Charge Indicator		Velcro Pad Size
	Safety Fuse		Velcro Pad Dimeter
	Fast Charging Function		Rabeting Depth
	Safe Charging		Planing Depth
	Electrical Cable Length		Planing Width
	Motor Power		Collet Dimeter
	Voltage/Frequency		Chainsaw bar length
	Quick-release chuck Detachable SDS chuck to be replaced with the additional HSS chuck		Cutting Angle And Depth
	SDS-Plus connection end		Blowing Rate / Airflow
	SDS-Max connection end		Air Temperature
	HEX connection end		Platen Diameter
	MAG Magnesium housing Enclosing the gears and the hammering/drilling mechanism for better heat dissipation		Mixing Paddle Size
	ALU Aluminum housing Enclosing the gears and the hammering/drilling mechanism for better heat dissipation		Tool Weight
	Anti-vibration system Dampened Handles/Mechanism reducing vibration and increasing comfort and productivity		Packaging Tool comes in a hard case
	Safety Clutch Mechanical clutch reduces the kickback reaction protecting the operator		Packaging Tool comes in a Cartoon Color Box

**The Name
You Can Trust**

CONTENTS

CORDLESS TOOLS	1
Brushed Drill	2-5
Brushless Impact drill	6-8
Impact Wrench	9-10
Straight Rotary Hammer	10
Angle Grinder	11-12
Vacuum Cleaner	13
Ceramic Vibrator	14
Jig Saw	15
Circular Saw	16
battery pack	17-18
Charger	19
Battery Pack Set	20-21
DRILL DRIVERS	22
Electrical Drill Driver	23
Angle Drill Driver	23
Electrical Impact Drill	24-25
Drill Holder	26
Impact wrench	26
ROTARY HAMMERS	27
Rotary Hammer	28-30
DEMOLITION BREAKERS	31
Demolition Breaker	32-35

GRINDERS & METAL WORKING	36
Angle Grinder	37-40
Multi Function tool	41
Orbital Polisher	41
Dual Action Polisher	42
Polisher	42
Cut Off Saw	43
Mini Craft	44
Wood Working Tools	45
Sheet Sander	46
Orbital Sander	47
Circular Saw	47-48
Electric Planner	48
Jig saw	49
Electric Trimmer	50
Electric Router	50
Electric Chain Saw	51
Miter Saw	51-54
OTHER TOOLS	55
Electric Blower	56-57
Heat Gun	57-58
Drywall and Ceiling Swivel Sander	58
Electric Mixer	59
LED LIGHTS	60
Headlamp	61
Mini Torch	61
Standing Flash Light	62



Cordless Tools

Brushless Motor

12V
MAX Li-ion



20V
MAX Li-ion

DW0110020-1.5x2BMC

12V Cordless Brushed Drill

2-speed percussion drill with brush motor delivering up to 20Nm torque
 Compact design for access into tight spaces
 10mm keyless chuck enables easy bit changes and bit retention
 Features LED for workspace illumination
 Fuel gauge display on body to show remaining charge

TECHNICAL DATA

Voltage	12 V
Battery Capacity	1.5 Ah
Max. Torque	20 Nm
No-load Speed (gear1/gear2)	0-750 rpm
Torque Settings	18+1
Chuck Capacity	10 mm
Max. Drilling Capacity (metal/wood)	10/ 18 mm
Max. torque in each channel	20Nm
Weight	0.8 Kg



12V
MAX Li-ion


DW0110020-1.5x1B

12V Cordless Brushed Drill

2-speed percussion drill with brush motor delivering up to 20Nm torque
 Compact design for access into tight spaces
 10mm keyless chuck enables easy bit changes and bit retention
 Features LED for workspace illumination
 Fuel gauge display on body to show remaining charge

TECHNICAL DATA

Voltage	12 V
Battery Capacity	1.5 Ah
Max. Torque	20 Nm
No-load Speed (gear1/gear2)	0-750 rpm
Torque Settings	18+1
Chuck Capacity	10 mm
Max. Drilling Capacity (metal/wood)	10/ 18 mm
Max. torque in each channel	20Nm
Weight	0.8 Kg



12V
MAX Li-ion



DW0210020-1.5x2BMC

12V Cordless Brushed Drill

2-speed percussion drill with brush motor delivering up to 20Nm torque
Compact design for access into tight spaces
10mm keyless chuck enables easy bit changes and bit retention
Features LED for workspace illumination
Fuel gauge display on body to show remaining charge
Rubber over-moulded grip

TECHNICAL DATA

Voltage	12 V
Battery Capacity	1.5 Ah
Max. Torque	20 Nm
No-load Speed (gear1/gear2)	0-350/ 0-1350 rpm
Torque Settings	18+1
Chuck Capacity	10 mm
Max. Drilling Capacity (metal/wood)	10/ 18 mm
Max. torque in each channel	20Nm
Weight	0.8 Kg



12V
MAX Li-ion



DW0210020-1.5x1B

12V Cordless Brushed Drill

2-speed percussion drill with brush motor delivering up to 20Nm torque
Compact design for access into tight spaces
10mm keyless chuck enables easy bit changes and bit retention
Features LED for workspace illumination
Fuel gauge display on body to show remaining charge
Rubber over-moulded grip

TECHNICAL DATA

Voltage	12 V
Battery Capacity	1.5 Ah
Max. Torque	20 Nm
No-load Speed (gear1/gear2)	0-350/ 0-1350 rpm
Torque Settings	18+1
Chuck Capacity	10 mm
Max. Drilling Capacity (metal/wood)	10/ 18 mm
Max. torque in each channel	20Nm
Weight	0.8 Kg



12V
MAX Li-ion



DW0611045-2.0x2BMC

20V Compact Cordless Brushless Drill

2-speed percussion drill with a brushless motor delivering up to 50Nm torque
 Compact design for access into tight spaces
 10mm metal chuck enables quick bit changes and bit retention
 Features bright LED for workspace illumination
 Rubber over-moulded grip and all-metal reversible belt to hang tool quickly and easily"

TECHNICAL DATA

Voltage	20 V
Battery Capacity	2.0 Ah
Max. Torque	50 Nm
No-load Speed (gear1/gear2)	0-420/ 0-1650 rpm
Torque Settings	18+1
Chuck Capacity	10 mm
Max. Drilling Capacity (metal/wood)	10/ 20 mm
Max. torque in each channel	50Nm
Weight	0.9 Kg


DW0611045-2.0x1B

20V Compact Cordless Brushless Drill

2-speed percussion drill with a brushless motor delivering up to 50Nm torque
 Compact design for access into tight spaces
 10mm metal chuck enables quick bit changes and bit retention
 Features bright LED for workspace illumination
 Rubber over-moulded grip and all-metal reversible belt to hang tool quickly and easily"

TECHNICAL DATA

Voltage	20 V
Battery Capacity	2.0 Ah
Max. Torque	50 Nm
No-load Speed (gear1/gear2)	0-420/ 0-1650 rpm
Torque Settings	18+1
Chuck Capacity	10 mm
Max. Drilling Capacity (metal/wood)	10/ 20 mm
Max. torque in each channel	50Nm
Weight	0.9 Kg


DW0611045-B

20V Compact Cordless Brushless Drill

2-speed percussion drill with a brushless motor delivering up to 50Nm torque
 Compact design for access into tight spaces
 10mm metal chuck enables quick bit changes and bit retention
 Features bright LED for workspace illumination
 Rubber over-moulded grip and all-metal reversible belt to hang tool quickly and easily"

TECHNICAL DATA

Voltage	20 V
Battery Capacity	2.0 Ah
Max. Torque	50 Nm
No-load Speed (gear1/gear2)	0-420/ 0-1650 rpm
Torque Settings	18+1
Chuck Capacity	10 mm
Max. Drilling Capacity (metal/wood)	10/ 20 mm
Max. torque in each channel	50Nm
Weight	0.9 Kg



DW0614045-2.0x2BMC

20V Compact Cordless Brushless Drill

2-speed percussion drill with a brushless motor delivering up to 50Nm torque
Compact design for access into tight spaces
13mm metal chuck enables quick bit changes and bit retention
Features bright LED for workspace illumination
Rubber over-moulded grip and all-metal reversible belt to hang tool quickly and easily"

TECHNICAL DATA

Voltage	20 V
Battery Capacity	2.0 Ah
Max. Torque	50 Nm
No-load Speed (gear1/gear2)	0-420/ 0-1650 rpm
Torque Settings	18+1
Chuck Capacity	13 mm
Max. Drilling Capacity (metal/wood)	10/ 25 mm
Max. torque in each channel	50Nm
Weight	1.0 Kg



DW0614045-B

20V Compact Cordless Brushless Drill

2-speed percussion drill with a brushless motor delivering up to 50Nm torque
Compact design for access into tight spaces
13mm metal chuck enables quick bit changes and bit retention
Features bright LED for workspace illumination
Rubber over-moulded grip and all-metal reversible belt to hang tool quickly and easily"

TECHNICAL DATA

Voltage	20 V
Battery Capacity	2.0 Ah
Max. Torque	50 Nm
No-load Speed (gear1/gear2)	0-420/ 0-1650 rpm
Torque Settings	18+1
Chuck Capacity	13 mm
Max. Drilling Capacity (metal/wood)	10/ 25 mm
Max. torque in each channel	50Nm
Weight	1.0 Kg



DW0614060-2.0x2BMC

20V Compact Cordless Brushless Drill

2-speed percussion drill with a brushless motor delivering up to 60Nm torque and high power efficiency under load.
Compact design for access into tight spaces
13mm metal chuck enables quick bit changes and bit retention
Features bright LED for workspace illumination
Rubber over-moulded grip and all-metal reversible belt to hang tool quickly and easily"

TECHNICAL DATA

Voltage	20 V Max.
Battery Capacity	2.0 Ah
Max. Torque	60 Nm
No-load Speed (gear1/gear2)	0-(500/2000) rpm
Torque Settings	20+1
Chuck Capacity	13/32 mm
Max. Drilling Capacity (metal/wood)	10/ 25 mm
Max. torque in each channel	40/60 Nm
Weight	1.0 Kg



DW1611045-2.0x2BMC

20V Compact Cordless Brushless Impact Drill

2-speed percussion drill with a brushless motor delivering up to 50Nm torque
 Compact design for access into tight spaces
 10mm metal chuck enables quick bit changes and bit retention
 Features bright LED for workspace illumination
 Rubber over-moulded grip and all-metal reversible belt to hang tool quickly and easily"

TECHNICAL DATA

Voltage	20 V
Battery Capacity	2.0 Ah
Max. Torque	50 Nm
No-load Speed (gear1/gear2)	0-420/ 0-1650 rpm
Max. torque in each channel	50 Nm
Torque Settings	20+1+1
Impact Rate in each channel	0-(6300/ 24750) bpm
Chuck Capacity	10 mm
Max. Drilling Capacity (metal/wood)	10/ 25 mm
Weight	0.9 Kg


DW1611045-2.0x1B

20V Compact Cordless Brushless Impact Drill

2-speed percussion drill with a brushless motor delivering up to 50Nm torque
 Compact design for access into tight spaces
 10mm metal chuck enables quick bit changes and bit retention
 Features bright LED for workspace illumination
 Rubber over-moulded grip and all-metal reversible belt to hang tool quickly and easily"

TECHNICAL DATA

Voltage	20 V
Battery Capacity	2.0 Ah
Max. Torque	50 Nm
No-load Speed (gear1/gear2)	0-420/ 0-1650 rpm
Max. torque in each channel	50 Nm
Torque Settings	20+1+1
Impact Rate in each channel	0-(6300/ 24750) bpm
Chuck Capacity	10 mm
Max. Drilling Capacity (metal/wood)	10/ 25 mm
Weight	0.9 Kg


DW1611045-B

20V Compact Cordless Brushless Impact Drill

2-speed percussion drill with a brushless motor delivering up to 50Nm torque
 Compact design for access into tight spaces
 10mm metal chuck enables quick bit changes and bit retention
 Features bright LED for workspace illumination
 Rubber over-moulded grip and all-metal reversible belt to hang tool quickly and easily"

TECHNICAL DATA

Voltage	20 V
Battery Capacity	2.0 Ah
Max. Torque	50 Nm
No-load Speed (gear1/gear2)	0-420/ 0-1650 rpm
Max. torque in each channel	50 Nm
Torque Settings	20+1+1
Impact Rate in each channel	0-(6300/ 24750) bpm
Chuck Capacity	10 mm
Max. Drilling Capacity (metal/wood)	10/ 25 mm
Weight	0.9 Kg



DW1614045-2.0x2BMC

20V Compact Cordless Brushless Impact Drill

2-speed percussion drill with a brushless motor delivering up to 50Nm torque
Compact design for access into tight spaces
13mm metal chuck enables quick bit changes and bit retention
Features bright LED for workspace illumination
Rubber over-moulded grip and all-metal reversible belt to hang tool quickly and easily

TECHNICAL DATA

Voltage	20 V
Battery Capacity	2.0 Ah
Max. Torque	50 Nm
No-load Speed (gear1/gear2)	0-420/ 0-1650 rpm
Max. torque in each channel	50 Nm
Torque Settings	20+1+1
Impact Rate in each channel	0-(6300/ 24750) bpm
Chuck Capacity	13 mm
Max. Drilling Capacity (metal/wood)	10/ 25 mm
Weight	1.0 Kg



DW1614045-B

20V Compact Cordless Brushless Impact Drill

2-speed percussion drill with a brushless motor delivering up to 50Nm torque
Compact design for access into tight spaces
13mm metal chuck enables quick bit changes and bit retention
Features bright LED for workspace illumination
Rubber over-moulded grip and all-metal reversible belt to hang tool quickly and easily

TECHNICAL DATA

Voltage	20 V
Battery Capacity	2.0 Ah
Max. Torque	50 Nm
No-load Speed (gear1/gear2)	0-420/ 0-1650 rpm
Max. torque in each channel	50 Nm
Torque Settings	20+1+1
Impact Rate in each channel	0-(6300/ 24750) bpm
Chuck Capacity	13 mm
Max. Drilling Capacity (metal/wood)	10/ 25 mm
Weight	1.0 Kg



DW1614060-2.0x2BMC

20V Compact Cordless Brushless Impact Drill

2-speed percussion drill with a brushless motor delivering up to 100Nm torque and high power efficiency under load.
Compact design for access into tight spaces
13mm metal chuck enables quick bit changes and bit retention
Features bright LED for workspace illumination
Rubber over-moulded grip and all-metal reversible belt to hang tool quickly and easily

TECHNICAL DATA

Voltage	20 V Max.
Battery Capacity	2.0 Ah
Max. Torque	60 Nm
No-load Speed (gear1/gear2)	0-(500/2000) rpm
Max. torque in each channel	40/60 Nm
Torque Settings	13+1+1
Impact Rate in each channel	0-(7500/30000) bpm
Chuck Capacity	13 mm
Max. Drilling Capacity (metal/wood/Masonry)	13/32/10 mm
Weight	1.0 Kg



20V
MAX Li-ion


DW1614100-4.0x2BMC

20V Compact Cordless Brushless Impact Drill

2-speed percussion drill with a brushless motor delivering up to 100Nm torque and high power efficiency under load.
Compact design for access into tight spaces
Increased operator safety with Autostop control mode preventing over-rotation in a bind-up
13mm metal chuck enables quick bit changes and bit retention
Features bright LED for workspace illumination
Rubber over-moulded grip and all-metal reversible belt to hang tool quickly and easily
Selectable "impulse" mode to increase the working speed more than 20%

TECHNICAL DATA

Voltage	20 V Max.
Battery Capacity	4.0 Ah
Max. Torque	100 Nm
No-load Speed (gear1/gear2)	0-(500/2100) rpm
Max. torque in each channel	70/100 Nm
Torque Settings	21+1+1
Impact Rate in each channel	0-(7500/31500) bpm
Chuck Capacity	13 mm
Max. Drilling Capacity (metal/wood/Masonry)	13/32/12 mm
Weight	1.4 Kg



20V
MAX Li-ion



DW2504345-2.0x2BMC

20V Compact Cordless Brushless Impact Wrench 1/2"

3 speed impact wrench with a brushless motor delivering up to 350Nm torque
Features max, hard, medium and soft impact power modes to suit different applications in both forward and reverse
Compact design for access into tight spaces
Features bright LED for workspace illumination
Rubber over-moulded grip and all-metal reversible belt to hang tool quickly and easily

TECHNICAL DATA

Voltage	20 V
Battery Capacity	2.0 Ah
Max. Torque	350 Nm
Anvil Size	1/2" square
No-load Speed(gear1/gear2/gear3/gear4)	0-(1600/2000/2400/2800)
Max. torque in each channel	200/250/300/350 Nm
Recommended thread size	M10-M20
Recommended socket size	12-30
Weight	1.1 Kg



DW2504350-3.0x2BMC

20V Long Design Cordless Impact Wrench 1/2"

2 speed impact wrench with a brushless motor delivering up to 350Nm torque
Features max, hard and soft impact power modes to suit different applications in both forward and reverse
Features bright LED for workspace illumination
Rubber over-moulded grip and all-metal reversible belt to hang tool quickly and easily

TECHNICAL DATA

Voltage	20 V
Battery Capacity	3.0 Ah
Max. Torque	350 Nm
Anvil Size	1/2" square
No-load Speed(gear1/gear2)	0-(1600/2300)
Max. torque in each channel	200/350 Nm
Recommended thread size	M10-M20
Recommended socket size	12-30
Weight	1.1 Kg



DW2504500-2.0x2BMC

20V Compact Cordless Brushless Impact Wrench 1/2"

3 speed impact wrench with a brushless motor delivering up to 500Nm torque
Bolt removal control delivers full torque output, then decreases speed once the bolt is loosened to prevent fastener drops
Features max, hard, medium and soft impact power modes to suit different applications in both forward and reverse
Compact and light weight design for easy access into tight spaces
Features bright LED for workspace illumination
Rubber over-moulded grip and all-metal reversible belt to hang tool quickly and easily

TECHNICAL DATA

Voltage	20 V
Battery Capacity	2.0 Ah
Max. Torque	500 Nm
Anvil Size	1/2" square
No-load Speed(gear1/gear2/gear3)	0-(1550/2500/3100)
Max. torque in each channel	210/ 300/ 500 Nm
Recommended thread size	M10-M20
Recommended socket size	17-30
Weight	1.1 Kg



DW2504800-4.0x2BMC

20V Compact Cordless Brushless Impact Wrench 1/2"

3 speed impact wrench with a brushless motor delivering up to 800Nm torque
 Bolt removal control delivers full torque output, then decreases speed once the bolt is loosened to prevent fastener drops
 Features max, hard, medium and soft impact power modes to suit different applications in both forward and reverse
 Compact design for access into tight spaces
 Features bright LED for workspace illumination
 Rubber over-moulded grip and all-metal reversible belt to hang tool quickly and easily

TECHNICAL DATA

Voltage	20 V
Battery Capacity	4.0 Ah
Max. Torque	800 Nm
Anvil Size	1/2" square
No-load Speed(gear1/gear2/gear3)	0-(1200/1800/2500)
Max. torque in each channel	510/ 630/ 800 Nm
Recommended thread size	M12-M24
Recommended socket size	19-36
Weight	1.8 Kg


DW2506100-4.0x2BMC

20V Compact Cordless Brushless Impact Wrench 1/2"

3 speed impact wrench with a brushless motor delivering up to 1000Nm torque (Forward) and 1300Nm (back ward)
 Bolt removal control delivers full torque output, then decreases speed once the bolt is loosened to prevent fastener drops
 Features max, hard, medium and soft impact power modes to suit different applications in both forward and reverse
 Extra impact power can reach 1300Nm to loosen the bolt
 Features bright LED for workspace illumination
 Rubber over-moulded grip
 Anti-vibration construction designed to extend working time

TECHNICAL DATA

Voltage	20 V
Battery Capacity	4.0 Ah
Max. Torque	1000 Nm
Anvil Size	3/4" square
No-load Speed(gear1/gear2/gear3)	0-(1000/1300/1700)
Max. torque in each channel	600/ 700/ 1000 N.m (Forward) 1300 Nm (Backward)
Recommended thread size	M16-M30
Recommended socket size	27-46
Weight	3.1 Kg


DW6320000-B

20V Cordless Straight Rotary Hammer

Sturdy motor providing high performance
 Powerful pistol grip multi purpose
 Light chiseling function

TECHNICAL DATA

Voltage	20 V Max.
Battery Capacity	4.0 Ah
No-load Speed	0-1100 rpm
Impact Rate	0-4800 rppm
Impact energy	2.8 J
Max.Drill Capacity [Concrete]	26 mm
Max.Drill Capacity [Steel]	13 mm
Max.Drill Capacity [Wood]	30 mm
Bare Weight	2.8 Kg



DW4545000-4.0x2BMC

20V Cordless Angle Grinder

High performance angel grinder fit with brushless motor for longer life time
3 adjustable speed setting for different application
Slim body design for easy to use
Rubber over-moulded grip



TECHNICAL DATA

Voltage	20 V
Battery Capacity	4.0 Ah
Rated Speed	8000 rpm
Adjustable speed channel	3000/ 5000/ 8150 rpm
Spindle size	M14
Disc Diameter	115 mm
Weight	1.4 Kg



DW4545000-B

20V Cordless Angle Grinder

High performance angel grinder fit with brushless motor for longer life time
3 adjustable speed setting for different application
Slim body design for easy to use
Rubber over-moulded grip



TECHNICAL DATA

Voltage	20 V
Battery Capacity	4.0 Ah
Rated Speed	8000 rpm
Adjustable speed channel	3000/ 5000/ 8150 rpm
Spindle size	M14
Disc Diameter	115 mm
Weight	1.4 Kg



DW4550000-4.0x2BMC

20V Cordless Angle Grinder

High performance angel grinder fit with brushless motor for longer life time
 3 adjustable speed setting for different application
 Slim body design for easy to use
 Rubber over-moulded grip

TECHNICAL DATA

Voltage	20 V
Battery Capacity	4.0 Ah
Rated Speed	8000 rpm
Adjustable speed channel	3000/ 5000/ 8150 rpm
Spindle size	M14
Disc Diameter	125 mm
Weight	1.5 Kg


DW4550000-B

20V Cordless Angle Grinder

High performance angel grinder fit with brushless motor for longer life time
 3 adjustable speed setting for different application
 Slim body design for easy to use
 Rubber over-moulded grip

TECHNICAL DATA

Voltage	20 V
Battery Capacity	4.0 Ah
Rated Speed	8000 rpm
Adjustable speed channel	3000/ 5000/ 8150 rpm
Spindle size	M14
Disc Diameter	125 mm
Weight	1.5 Kg



DW6120000-2.0x1B

20V Cordless Brushless Jig Saw

Powerful high performance jigsaw fit with brushless motor
4-stage pendulum action delivers precise/ clean and fast cutting
A detachable soft shoe protects the cut material during use
A tool-free chuck system allows easy blade changes
Keyless bevel facility on the base plate allows for adjustment between 0-45°
Air blow function to blow dust away from cutting area
Air blow and vacuum switch for easy to use
Features bright LED for workspace illumination
Solid metal gear box to provide longer life time and reduce vibration
Rubber over-moulded grip



TECHNICAL DATA

Voltage	20 V
Battery Capacity	2.0 Ah
No-load Stroke Rate	800-3000 spm
Stroke Length	100 mm
Bevel Capacity	±45°
Max.depth of Cut [wood]	100 mm
Max.depth of Cut [metal]	10 mm
Bare Weight	2.3 Kg



DW6120000-B

20V Cordless Brushless Jig Saw

Powerful high performance jigsaw fit with brushless motor
4-stage pendulum action delivers precise/ clean and fast cutting
A detachable soft shoe protects the cut material during use
A tool-free chuck system allows easy blade changes
Keyless bevel facility on the base plate allows for adjustment between 0-45°
Air blow function to blow dust away from cutting area
Air blow and vacuum switch for easy to use
Features bright LED for workspace illumination
Solid metal gear box to provide longer life time and reduce vibration
Rubber over-moulded grip



TECHNICAL DATA

Voltage	20 V
Battery Capacity	2.0 Ah
No-load Stroke Rate	800-3000 spm
Stroke Length	100 mm
Bevel Capacity	±45°
Max.depth of Cut [wood]	100 mm
Max.depth of Cut [metal]	10 mm
Bare Weight	2.3 Kg



DW6320000-4.0x1B
20V Cordless Brushless Circular Saw

Powerful high performance circular saw fit with brushless motor
 Constant speed and current electronics in the tool to increase working speed
 Al base plate to provide stronger supporting and smoothly sliding surface
 Extra thin blade 1.0mm (body thickness) to increase cutting speed and extend working time
 Easy base plate cutting angle adjustment 0-45°
 Features bright LED for workspace illumination during cutting
 Rubber over-moulded grip


TECHNICAL DATA

Voltage	20 V
Battery Capacity	4.0 Ah
No-load Speed	4500 rpm
Blade Diameter	185 mm
Blade Bore Diameter	20 mm
Bevel Capacity	45°
90° Max.depth of Cut	63 mm
45° Max.depth of Cut	41 mm
Bare Weight	3.2 Kg


DW6320000-B
20V Cordless Brushless Circular Saw

Powerful high performance circular saw fit with brushless motor
 Constant speed and current electronics in the tool to increase working speed
 Al base plate to provide stronger supporting and smoothly sliding surface
 Extra thin blade 1.0mm (body thickness) to increase cutting speed and extend working time
 Easy base plate cutting angle adjustment 0-45°
 Features bright LED for workspace illumination during cutting
 Rubber over-moulded grip


TECHNICAL DATA

Voltage	20 V
Battery Capacity	4.0 Ah
No-load Speed	4500 rpm
Blade Diameter	185 mm
Blade Bore Diameter	20 mm
Bevel Capacity	45°
90° Max.depth of Cut	63 mm
45° Max.depth of Cut	41 mm
Bare Weight	3.2 Kg



AH71203-12

12V Cordless Ceramic Vibrator

Adsorption lock design
Stepless vibration control
Strong adsorption & for multi-size tiles
Water level for accuracy
LED Working Light



TECHNICAL DATA

Voltage	12 V
Battery Capacity	1.5 Ah
Vibration Frequency	3000-8500 rpm
Tile Size	30-150 cm
Suction Capacity	60 Kg
Charging Time	2.0 H



AH71203-20

20V Cordless Ceramic Vibrator

Adsorption lock design
Stepless vibration control
Strong adsorption & for multi-size tiles
Water level for accuracy
LED Working Light



TECHNICAL DATA

Voltage	20 V
Battery Capacity	2.0 Ah
Vibration Frequency	3000-8500 rpm
Vibration Switch	12 Speeds
Tile Size	30-200 cm
Suction Capacity	100 Kg
Charging Time	2.0-3.0 H



DW8000550-4.0x2B
20V Cordless Brush Motor Vacuum Cleaner

Light weight and compact cleaner, suitable for light home use and car cleaning
Suitability to wet floor/ surface and dry cleaning
0.65L big capacity for dust container

TECHNICAL DATA

Voltage	20 V
Battery Capacity	4.0 Ah
No-load Speed	22000 rpm
Suction	5.0 kpa
Weight	0.97Kg


DW8000550-2.0x2B
20V Cordless Brush Motor Vacuum Cleaner

Light weight and compact cleaner, suitable for light home use and car cleaning
Suitability to wet floor/ surface and dry cleaning
0.65L big capacity for dust container

TECHNICAL DATA

Voltage	20 V
Battery Capacity	2.0 Ah
No-load Speed	22000 rpm
Suction	5.0 kpa
Weight	0.97Kg


DW8000550-B
20V Cordless Brush Motor Vacuum Cleaner

Light weight and compact cleaner, suitable for light home use and car cleaning
Suitability to wet floor/ surface and dry cleaning
0.65L big capacity for dust container

TECHNICAL DATA

Voltage	20 V
Battery Capacity	2.0 Ah
No-load Speed	22000 rpm
Suction	5.0 kpa
Weight	0.97Kg



DW0012015B-CB DW0012020B-CB

12V Battery Pack

The shell composition is of ABS+TPE material
Power display function
Built-in safety fuse

TECHNICAL DATA

DW0012015B-CB DW0012020B-CB

Voltage	12 V	12 V
Battery Capacity	1.5 Ah	2.0 Ah
Cell	10 C	10 C
Weight	0.21 Kg	0.22 Kg



DW0020020S-CB

20V Battery Pack

The shell composition is of ABS+TPE material
Power display function
Built-in safety fuse

TECHNICAL DATA

Voltage	20 V
Battery Capacity	2.0 Ah
Cell	10 C
Weight	0.4 Kg



DW0020021P-CB

20V Battery Pack

The shell composition is of ABS+TPE material
Power display function
Built-in safety fuse

TECHNICAL DATA

Voltage	20 V
Battery Capacity	2.0 Ah
Cell	15 C (Pro.)
Weight	0.4 Kg



DW0020040S-CB
20V Battery Pack

The shell composition is of ABS+TPE material
Power display function
Built-in safety fuse

TECHNICAL DATA

Voltage	20 V
Battery Capacity	3.0 Ah
Cell	10 C
Weight	0.6 Kg



20V
MAX Li-ion


DW0020040S-CB
20V Battery Pack

The shell composition is of ABS+TPE material
Power display function
Built-in safety fuse

TECHNICAL DATA

Voltage	20 V
Battery Capacity	4.0 Ah
Cell	15 C
Weight	0.6 Kg



20V
MAX Li-ion


DW0020041P-CB
20V Battery Pack

The shell composition is of ABS+TPE material
Power display function
Built-in safety fuse

TECHNICAL DATA

Voltage	20 V
Battery Capacity	4.0 Ah
Cell	15 C (Pro.)
Weight	0.6 Kg



20V
MAX Li-ion



DW0050020S-CB DW0050040S-CB

20V Charger

The shell composition is of ABS+TPE material
Power display function
Built-in safety fuse

TECHNICAL DATA

	DW0050020S-CB	DW0050040S-CB
Input parameter	110-240V~ 50/60Hz 42W	110-240V~ 50/60Hz 90W
Output Voltage	21 V	21 V
Output current	2.0 A	4.0 A
Weight	0.34 Kg	0.36 Kg



DW0050021P-CB

20V Charger/ Pro Level

The shell composition is of ABS+TPE material
Power display function
Built-in safety fuse

TECHNICAL DATA

Input parameter	200-240V~ 50/60Hz 45W
Output Voltage	21 V
Output current	2.0 A
Weight	0.35 Kg



DW0050041P-CB

20V Charger/ Pro Level

The shell composition is of ABS+TPE material
Power display function
Built-in safety fuse

TECHNICAL DATA

Input parameter	200-240V~ 50/60Hz 95W
Output Voltage	21 V
Output current	4.0 A
Weight	0.55 Kg



DW0022 1x2.0/1x2.0S

20V Battery Pack Set

The shell composition is of ABS+TPE material
Power display function
Built-in safety fuse

TECHNICAL DATA

Voltage	20 V
Battery Capacity	2.0 Ah
Cell	10 C
Weight	0.4 Kg



20V
MAX Li-ion



DW0022 1x4.0/1x2.0S

20V Battery Pack Set

The shell composition is of ABS+TPE material
Power display function
Built-in safety fuse

TECHNICAL DATA

	2.0S	4.0S
Voltage	20 V	20 V
Battery Capacity	2.0 Ah	4.0 Ah
Cell	10 C	15 C
Weight	0.4 Kg	0.6 Kg



20V
MAX Li-ion



DW0052 1x2.0/1x2.0S

20V Power Pack Set

The shell composition is of ABS+TPE material
Power display function
Built-in safety fuse

TECHNICAL DATA

DW0020020S-CB

Voltage	20 V
Battery Capacity	2.0 Ah
Cell	10 C
Weight	0.4 Kg

DW0050020S-CB

Input parameter	110-240V~ 50/60Hz 42W
Output Voltage	21 V
Output current	2.0 A
Weight	0.4 Kg



20V
MAX Li-ion



DW0052 1x2.0/2x2.0S

20V Power Pack Set

The shell composition is of ABS+TPE material
Power display function
Built-in safety fuse

TECHNICAL DATA

DW0020020S-CB

Voltage	20 V
Battery Capacity	2.0 Ah
Cell	10 C
Weight	0.43 Kg

DW0050020S-CB

Input parameter	110-240V~ 50/60Hz 42W
Output Voltage	21 V
Output current	2.0 A
Weight	0.4 Kg



20V
MAX Li-ion



DW0052 1x2.0/2x20P

20V Power Pack Set

The shell composition is of ABS+TPE material
Power display function
Built-in safety fuse

TECHNICAL DATA

DW0020021P-CB

Voltage	20 V
Battery Capacity	2.0 Ah
Cell	15 C
Weight	0.43 Kg

DW0050040S-CB

Input parameter	110-240V~ 50/60Hz 90W
Output Voltage	21 V
Output current	4.0 A
Weight	0.4 Kg



20V
MAX Li-ion



DW0052 1x4.0/1x4.0P

20V Power Pack Set

The shell composition is of ABS+TPE material
Power display function
Built-in safety fuse

TECHNICAL DATA

DW0020041P-CB

Voltage	20 V
Battery Capacity	4.0 Ah
Cell	15 C (Pro.)
Weight	0.55 Kg

DW0050041P-CB

Input parameter	200-240V~ 50/60Hz 95W
Output Voltage	21 V
Output current	4.0 A
Weight	0.6 Kg



20V
MAX Li-ion





Drills



DW01315

450W Electrical Drill Driver

Compact Design and light weight for improved mobility
Better grip, comfortable handling and precise control
Switch lock for comfortable continuous operation
Variable speed knob

TECHNICAL DATA

Voltage	220-240V 50~60 Hz
Power Input	450 W
No-load Speed	0-3300 rpm
Chuck Capacity (min/max):	1.0-10.0 mm
Max. drilling capacity (Metal/Wood):	6 -20 mm
Max. screw fastening Ø	6 mm
Weight	1.5 Kg



DW01315L

450W Electrical Drill Driver with Keyless Chuck

Compact Design and light weight for improved mobility
Better grip, comfortable handling and precise control
Switch lock for comfortable continuous operation
Variable speed knob
Keyless Chuck

TECHNICAL DATA

Voltage	220-240V 50~60 Hz
Power Input	450 W
No-load Speed	0-3300 rpm
Chuck Capacity (min/max):	1.0-10.0 mm
Max. drilling capacity (Metal/Wood):	6 -20 mm
Max. screw fastening Ø	6 mm
Weight	1.5 Kg



DW01520

500W Electrical Right Angle Drill Driver

Compact Design and light weight for improved mobility
Better grip, comfortable handling and precise control
LED working light

TECHNICAL DATA

Voltage	220-240V 50~60 Hz
Power Input	500 W
No-load Speed	0-1200 rpm
Chuck Capacity (min/max):	10 mm
Max. drilling capacity (Metal/Wood):	10 -25 mm
Max. screw fastening Ø	8 mm
Weight	2.0 Kg



DW02626

550W Electrical Impact Drill

Robust and compact design
Better grip, comfortable handling and precise control
Switch lock for comfortable continuous operation
Variable speed knob
2 - mode switch for Drilling and Hammer Drilling
Adjustable depth gauge

TECHNICAL DATA

Voltage	220-240V 50~60 Hz
Power Input	550 W
No-load Speed	0-2800 rpm
Impact Rate	0-44800 bpm
Chuck Capacity (min/max):	1.5 - 13 mm
Max. drilling capacity (Metal/Wood/Masonry)	10/25/13 mm
Weight	1.6 Kg



DW02635-V4

650W Compact Electrical Impact Drill

Robust and compact design
Better grip, comfortable handling and precise control
Switch lock for comfortable continuous operation
Variable speed knob
2 - mode switch for Drilling and Hammer Drilling
Adjustable depth gauge

TECHNICAL DATA

Voltage	220-240V 50~60 Hz
Power Input	650 W
No-load Speed	0-3000 rpm
Impact Rate	0-48000 bpm
Chuck Capacity (min/max)	1.5-13 mm
Max. drilling capacity (Metal/Wood/Masonry)	(10-25-13)mm
Weight	2.2 Kg



DW02645-V4

750W Compact Electrical Impact Drill

Robust and compact design
Better grip, comfortable handling and precise control
Switch lock for comfortable continuous operation
Variable speed knob
2 - mode switch for Drilling and Hammer Drilling
Adjustable depth gauge

TECHNICAL DATA

Voltage	220-240V 50~60 Hz
Power Input	750 W
No-load Speed	0-3000 rpm
Impact Rate	0-48000 bpm
Chuck Capacity (min/max)	1.5-13 mm
Max. drilling capacity (Metal/Wood/Masonry)	(10-25-13)mm
Weight	2.5 Kg



DW02655-V4

850W Compact Electrical Impact Drill

Robust and compact design
Better grip, comfortable handling and precise control
Switch lock for comfortable continuous operation
Variable speed knob
2 - mode switch for Drilling and Hammer Drilling
Adjustable depth gauge

TECHNICAL DATA

Voltage	220-240V 50~60 Hz
Power Input	850 W
No-load Speed	0-3000 rpm
Impact Rate	0-48000 bpm
Chuck Capacity (min/max)	1.5-13 mm
Max. drilling capacity (Metal/Wood/Masonry)	(10-30-13)mm
Weight	2.8 Kg



DW02795

1050W Electrical Impact Drill

Robust and compact design
Better grip, comfortable handling and precise control
Switch lock for comfortable continuous operation
Variable speed knob
2mode switch for Drilling and Hammer Drilling
Adjustable depth gauge

TECHNICAL DATA

Voltage	220-240V 50~60 Hz
Power Input	1050 W
No-load Speed	0-2800 rpm
Impact Rate	0-44800 bpm
Chuck Capacity (min/max)	1.5-13 mm
Max. drilling capacity (Metal/Wood/Masonry)	(10-25-13)mm
Weight	3.0 Kg



DW02775

1050W Electrical Impact Drill

Robust Design with a powerful motor
Better grip, comfortable handling and precise control
Switch lock for comfortable continuous operation
Variable speed knob
2-mode switch for Drilling and Hammer Drilling
Adjustable depth gauge

TECHNICAL DATA

Voltage	220-240V 50~60 Hz
Power Input	1050 W
No-load Speed	0-1100/0-3000 rpm
Impact Rate	0-17600/0-48000 bpm
Chuck Capacity (min/max)	1.5-13 mm
Max. drilling capacity (Metal/Wood/Masonry)	(10-25-13)mm
Weight	3.5 Kg



DW55205

Drill Holder

Ideal for use with electric drills-suitable for all standard models, with robust slide & pivot mechanism and sturdy cast iron base plate
 Strength-reinforcing lever with spring return for comfortable, accurate use
 Rotation angle 180° and Adjustable restraints with protective buffers
 Heavier cast iron base, more stable and small swing, less working deviation
 Suitable for standard models
 Robust slide with a pivot mechanism & sturdy cast iron plate
 Increased precision during operation
 Up to 180° rotation and adjustable restraints with protective buffer



TECHNICAL DATA

Drilling Capacity	60mm
Maximum Clamping Diameter	43mm
Maximum Rotation Angle	180°

DW09430

380W Impact Wrench

Rubber over-moulded grip and all-metal reversible belt to hang tool quickly and easily



TECHNICAL DATA

Voltage	220-240 V / 50~60 Hz
Power Input	380 W
No-load Speed	0-1800 rpm
Max. Torque	320 Nm
Anvil size	1/2" square
Recommended thread size	M12-M20
Recommended socket size	12/ 19/ 21/ 24/ 30
Weight	2.9 Kg





Rotary Hammers

DW26QCC-V4 800W Rotary Hammer

Sturdy motor providing high performance
Powerful pistol grip multi purpose
Light chiseling function
Comes with a detachable chuck

TECHNICAL DATA

Voltage	220-240V 50~60 Hz
Power Input	800 W
No-load Speed	1350 rpm
Impact Rate	5500 bpm
Impact energy	3.0 J
Max.Drill Capacity [Concrete]	26 mm
Max.Drill Capacity [Steel]	13 mm
Max.Drill Capacity [Wood]	30 mm
Weight	3.0 Kg



DW2601-V4 800W Rotary Hammer

Sturdy motor providing high performance
Powerful pistol grip multi purpose
Light chiseling function

TECHNICAL DATA

Voltage	220-240V 50~60 Hz
Power Input	800 W
No-load Speed	1100 rpm
Impact Rate	4900 bpm
Impact energy	3.0 J
Max.Drill Capacity [Concrete]	26 mm
Max.Drill Capacity [Steel]	13 mm
Max.Drill Capacity [Wood]	30 mm
Weight	2.7 Kg



DW26G-V4 850W Rotary Hammer

Sturdy design providing more space for motor and mechanism
Powerful D-handle multi purpose
Better grip
Safety manual clutch

TECHNICAL DATA

Voltage	220-240V 50~60 Hz
Power Input	850 W
No-load Speed	800 rpm
Impact Rate	3000 bpm
Impact Energy	4.0 J
Max.Drill Capacity (Concrete/Steel/Wood)	26/13/40 mm
Weight	4.0 kg



DW32HT-V4

1250W Rotary Hammer

Sturdy design providing more space for motor and mechanism
Powerful D-handle multi purpose
Better grip
Safety clutch
Anti vibration system to reduce fatigue & increase productivity



TECHNICAL DATA

Voltage	220-240V 50~60 Hz
Power Input	1250 W
No-load Speed	300-1050 rpm
Impact Rate	2400-4200 bpm
Impact Energy	5.0 J
Max.Drill Capacity [Concrete/Steel/Wood]	32/13/40 mm
Weight	4.0 Kg



DW36PT-V4

1500W Rotary Hammer

Sturdy design providing more space for motor and mechanism
Powerful D-handle multi purpose
Better grip
Safety clutch
Anti vibration system to reduce fatigue & increase productivity



TECHNICAL DATA

Voltage	220-240V 50~60 Hz
Power Input	1500 W
No-load Speed	800 rpm
Impact Rate	3600 bpm
Impact Energy	5.0 J
Max.Drill Capacity [Concrete/Steel/Wood]	36/13/40 mm
Weight	5.0 kg



DW40E-V4

1450W Rotary Hammer

Sturdy design providing more space for motor and mechanism
Powerful D-handle multi purpose
Better grip
Safety clutch
Anti vibration system to reduce fatigue & increase productivity



TECHNICAL DATA

Voltage	220-240V 50~60 Hz
Power Input	1450 W
No-load Speed	680 rpm
Impact Rate	3240bpm
Impact Energy	12 J
Max.Drill Capacity [Concrete/Steel]	40/13 mm
Max.Drill Capacity [Core Bit]	80 mm
Weight	6.0 Kg



DW50A2T-V4

1700W Rotary Hammer

Die cast magnesium alloy casting for better heat dissipation, lighter weight and no bustiness
Soft grip
Anti vibration system to reduce fatigue & increase productivity
Overload safety clutch



TECHNICAL DATA

Voltage	220~230V ~50Hz
Power Input	1700 W
No-load Speed	160-320 rpm
Impact Rate	950-1900 bpm
Impact Energy	27 J
Max.Drill Capacity [Concrete]	50 mm
Weight	10.3 Kg





APT

Demolition Breakers



DW10D-V4

1350W Demolition Breaker

Simple and compact design
Versatile for light duty chiseling in concrete and masonry
Spring anti-vibration system reducing fatigue and increasing productivity
Ergonomic handle design with soft grip

TECHNICAL DATA

Voltage	220-240V 50~60 Hz
Power Input	1350 W
Impact Rate	2900 bpm
Impact Energy	12 J
Weight	5.4 Kg



DW11C-V4

1300W Demolition Breaker

Simple and compact design
Versatile for light duty chiseling in concrete and masonry
Spring anti-vibration system reducing fatigue and increasing productivity
Ergonomic handle design with soft grip

TECHNICAL DATA

Voltage	220-240V 50~60 Hz
Power Input	1300 W
Impact Rate	3900 bpm
Impact Energy	15 J
Weight	6 Kg



DW12D-V4

1300W Demolition Breaker

Simple and compact design
Versatile for light duty chiseling in concrete and masonry
Spring anti-vibration system reducing fatigue and increasing productivity
Ergonomic handle design with soft grip

TECHNICAL DATA

Voltage	220-240V 50~60 Hz
Power Input	1300 W
Impact Rate	4000 bpm
Impact Energy	15 J
Weight	6 Kg



DW15D-V4

1300W Demolition Breaker

Powerful demolition hammer for heavy duty chiseling in concrete and masonry
Spring anti-vibration system reducing fatigue and increasing productivity
Ergonomic handle design with soft grip

TECHNICAL DATA

Voltage	220-240V 50~60 Hz
Power Input	1300 W
Impact Rate	2400 bpm
Impact Energy	20 J
Weight	7 Kg



DW15D-V4 Max

1300W Demolition Breaker

Powerful demolition hammer for heavy duty chiseling in concrete and masonry
Spring anti-vibration system reducing fatigue and increasing productivity
Ergonomic handle design with soft grip

TECHNICAL DATA

Voltage	220-240V 50~60 Hz
Power Input	1300 W
Impact Rate	2400 bpm
Impact Energy	20 J
Weight	7 Kg



DW23

1700W Demolition Breaker

Powerful demolition hammer for heavy duty chiseling in concrete and masonry
Spring anti-vibration system reducing fatigue and increasing productivity
Ergonomic handle design with soft grip

TECHNICAL DATA

Voltage	220-240V 50~60 Hz
Power Input	1700W
Impact Rate	200-2100 bpm
Impact Energy	30 J
Weight	10 Kg



DW25B

1500W Demolition Breaker

Powerful demolition hammer for heavy duty chiseling in concrete and masonry
Spring anti-vibration system reducing fatigue and increasing productivity
Ergonomic handle design with soft grip

TECHNICAL DATA

Voltage	220-240V 50~60 Hz
Power Input	1500 W
Impact Rate	1800 bpm
Impact Energy	25 J
Weight	11 Kg



DW63

1700W Demolition Breaker

Versatile breaker for demolishing, chiseling floors and occasional wall applications
Ergonomic handle design with soft grip
Lock switch for continuous use

TECHNICAL DATA

Voltage	220-240V 50~60 Hz
Power Input	1700 W
Impact Rate	1150 bpm
Impact Energy	65 J
Weight	17 Kg



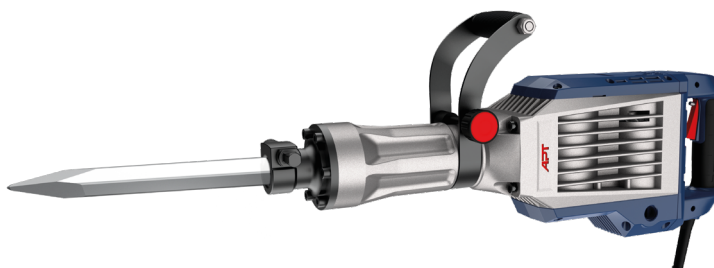
DW64

1600W Demolition Breaker

Versatile breaker for demolishing, chiseling floors and occasional wall applications
Ergonomic handle design with soft grip
Lock switch for continuous use

TECHNICAL DATA

Voltage	220-240V 50~60 Hz
Power Input	1600 W
Impact Rate	1900 bpm
Impact Energy	65 J
Weight	16 Kg



DW65

1500W Demolition Breaker

Versatile breaker for demolishing, chiseling floors and occasional wall applications
Ergonomic handle design with soft grip
Lock switch for continuous use

TECHNICAL DATA

Voltage	220-240V 50~60 Hz
Power Input	1500 W
Impact Rate	1150 bpm
Impact Energy	40 J
Weight	14.2 Kg



DW45-V4

1700W Demolition Breaker

Versatile breaker for demolishing, chiseling floors and occasional wall applications
Ergonomic handle design with soft grip
Lock switch for continuous use

TECHNICAL DATA

Voltage	220-240V 50~60 Hz
Power Input	1700 W
Impact Rate	1300 bpm
Impact Energy	45 J
Weight	14.0 Kg



DW50C

2200W Demolition Breaker

Versatile breaker for demolishing, chiseling floors and occasional wall applications
Ergonomic handle design with soft grip
Lock switch for continuous use

TECHNICAL DATA

Voltage	220-240V 50~60 Hz
Power Input	2200 W
Impact Rate	1100 bpm
Impact Energy	70 J
Weight	30 Kg





Grinders & Metal Working



DW05211

680W Angle Grinder 4.5"

With a well designed grip
Lock on slide switch
Two position side handle
Lightweight and compact design

TECHNICAL DATA

Voltage	220-240V 50~60 Hz
Power Input	680 W
Hole Diameter of Disc	22mm 4.5"/115mm
Spindle Thread	M14
No-load Speed	11000 rpm
Weight	2.0 Kg



DW05215-V4

750W Angle Grinder 4.5"

With a well designed grip
Lock on slide switch
Two position side handle
Lightweight and compact design

TECHNICAL DATA

Voltage	220-240V 50~60 Hz
Power Input	750 W
Hole Diameter of Disc	22mm 4.5"/115mm
Spindle Thread	M14
Cord Length	2m
No-load Speed	11000 rpm
Weight	2.2 Kg



DW05240-V4

1010W Angle Grinder 4.5"

With a well designed grip
Lock on slide switch
Two position side handle
Lightweight and compact design

TECHNICAL DATA

Voltage	220-240V 50~60 Hz
Power Input	1010 W
No-load Speed	11000 rpm
Disc Diameter	125 mm
Weight	2.0 Kg



DW05340-V4 1010W Angle Grinder 5"

With a well designed grip
Lock on slide switch
Two position side handle
Lightweight and compact design

TECHNICAL DATA

Voltage	220-240V 50~60 Hz
Power Input	1010 W
No-load Speed	11000 rpm
Disc Diameter	125 mm
Weight	2.0 Kg



DW05369-V4 1150W Angle Grinder 5"

With a well designed grip
Lock on slide switch
Two position side handle
Compact Design and light weight for improved mobility
Better, more comfortable grip via the long handle
Variable speed

TECHNICAL DATA

Voltage	220-240V 50~60 Hz
Power Input	1150 W
No-load Speed	3500-11000 rpm
Disc Diameter	125 mm
Weight	2.5 Kg



DW05370-V4 1150W Angle Grinder 5"

With a well designed grip
Lock on slide switch
Two position side handle
Compact Design and light weight for improved mobility
Better, more comfortable grip via the long handle

TECHNICAL DATA

Voltage	220-240V 50~60 Hz
Power Input	1150 W
No-load Speed	11000 rpm
Disc Diameter	125 mm
Weight	2.5 Kg



DW05372

1150W Angle Grinder 5"

Variable speed control dial enables user to match the speed to the application
Constant speed control automatically applies additional power to the motor to maintain speed under load
Soft start suppresses start-up reaction for smooth start-ups and longer gear life

TECHNICAL DATA

Voltage	220-240V 50~60 Hz
Power Input	1150 W
No-load Speed	11000 rpm
Disc Diameter	125 mm
Weight	2.0 Kg



DW05555-V4

1500W Angle Grinder 7"

3-position adjustable side handle of hand grinder allows greater control in multiple positions
Single-wrench wheel changes with spindle-lock button

TECHNICAL DATA

Voltage	220-240V 50~60 Hz
Input Power	1500 W
No-load Speed	8500 rpm
Max. Dis Diameter	180mm
Weight	2.6 Kg



DW05621

2000W Angle Grinder 9"

3-position adjustable side handle of hand grinder allows greater control in multiple positions
Single-wrench wheel changes with spindle-lock button

TECHNICAL DATA

Voltage	220-240V 50~60 Hz
Input Power	2000 W
No-load Speed	6500 rpm
Max. Dis Diameter	230 mm
Weight	4.3 Kg



DW05623

2100W Angle Grinder 9"

3-position adjustable side handle of hand grinder allows greater control in multiple positions
Single-wrench wheel changes with spindle-lock button

TECHNICAL DATA

Voltage	220-240V 50~60 Hz
Input Power	2100 W
No-load Speed	6500 rpm
Max. Dis Diameter	230 mm
Weight	5.7 Kg



DW05625-V4

2200W Angle Grinder 9"

3-position adjustable side handle of hand grinder allows greater control in multiple positions
Single-wrench wheel changes with spindle-lock button

TECHNICAL DATA

Voltage	220-240V 50~60 Hz
Input Power	2200 W
No-load Speed	6000 rpm
Max. Dis Diameter	230 mm
Weight	5.7 Kg



DW05665-V4

2600W Angle Grinder 9"

3-position adjustable side handle of hand grinder allows greater control in multiple positions
Single-wrench wheel changes with spindle-lock button

TECHNICAL DATA

Voltage	220-240V 50~60 Hz
Input Power	2600 W
No-load Speed	8500 rpm
Max. Dis Diameter	230 mm
Weight	5.7Kg



DW06512

300W Multi Function Tool

Limited position lock switch
Ergonomic slim handle design for better grip
Reducing fatigue and safety hazards
6-speed selector serves application versatility
LED Working Light

TECHNICAL DATA

Voltage	220V~ 60Hz
Input Power	300W
Oscillation Speed	15000-22000 rpm
Oscillation Angle	3°
Weight	1.4 Kg



DW06200

600W Orbital Polisher

Suitable for detail sanding works on small working surface or hard to reach area
Soft start for smooth start-ups
Variable speed controlled by dial to adjust the speed to different polishing application
Constant speed control under load for fast and powerful clear coat finishes
Equipped with conveniently ON/OFF switch for continuous operation
Ergonomically designed machine body as auxiliary handle with soft-grip for comfortable and easy operation
Easy assembly long or short shaft for different application
Replaceable balance blocks designed for different size pads to get the best vibration control.
Hook and loop pads for quick changes and conversion to a sander.
6m rubber cable for professional use

TECHNICAL DATA

Voltage	220-240V 50~60 Hz
Input Power	600 W
No-load Speed	200-4500 rpm
Pad size	1.2" / 30 mm 2.0" / 50 mm 3.0" / 75 mm
Weight	1.5 Kg



DW06300

720W Orbital Polisher 6"

Slower sanding removal rate but easy to control and result in good finishing on coat surface
Powerful motor with soft start for smooth start-ups
Variable speed controlled by dial to adjust the speed to different polishing application
Constant speed control under load for fast and powerful clear coat finishes
Equipped with a large 2-finger trigger switch with conveniently located lock-on button for continuous operation
Hook and loop pad for quick changes and conversion to a sander.

TECHNICAL DATA

Voltage	220-240V 50~60 Hz
Input Power	720 W
No-load Speed	2100-5000 rpm
Pad size	6" / 150 mm
Weight	1.5 Kg



DW06302

1200W Dual Action Polisher 6"

Slower sanding removal rate but easy to control and result in good finishing on coat surface
 Powerful motor with soft start for smooth start-ups
 Variable speed controlled by dial to adjust the speed to different polishing application
 Constant speed control under load for fast and powerful clear coat finishes
 Equipped with a large 2-finger trigger switch with conveniently located lock-on button for continuous operation
 Ergonomically designed handles with soft-grip for comfortable and easy operation
 Hook and loop pad for quick changes and conversion to a sander.
 Ideal for maximum control during slow polishing applications.



TECHNICAL DATA

Voltage	220-240V 50~60 Hz
Input Power	1200 W
No-load Speed	1600-4500 rpm
Pad size	6"/ 150 mm
Weight	1.5 Kg



DW06352

1300W Polisher 7"

High rotary speed and fast sanding removal rate, suitable for professional workers
 Powerful motor with soft start for smooth start-ups
 Variable speed controlled by dial to adjust the speed to different polishing application
 Constant speed control under load for fast and powerful clear coat finishes
 Equipped with a large 2-finger trigger switch with conveniently located lock-on button for continuous operation
 Ergonomically designed loop handle with rubberised soft-grip for comfortable operation
 Hook and loop pad for quick changes and conversion to a sander.
 Ideal for maximum control during slow polishing applications.



TECHNICAL DATA

Voltage	220-240V 50~60 Hz
Input Power	1300 W
No-load Speed	0-3200 rpm
Pad size	7"/ 180 mm
Weight	2.0 Kg



DW07350

2500W Cut Off Saw 14"

Patented double bell structure
Extra wide die cast base providing stability during the cutting process
Tool-free 45° provides stability when cutting work
Improved ergonomic handle design
Better grip, comfortable handling and precise control

TECHNICAL DATA

Voltage	220-240V 50~60 Hz
Input Power	2500 W
No-load Speed	3800 rpm
Blade Diameter	14"/ 355mm
Weight	12.4 Kg



DW07355

3000W Cut Off Saw 14"

Patented double bell structure
Extra wide die cast base providing stability during the cutting process
Tool-free 45° provides stability when cutting work
Improved ergonomic handle design
Better grip, comfortable handling and precise control

TECHNICAL DATA

Voltage	220-240V 50~60 Hz
Input Power	3000 W
No-load Speed	3800 rpm
Blade Diameter	14"/ 355mm
Weight	15.2 Kg



DW06412

135W Mini Craft

High-Performance Motor at all speeds
Variable speed for accessory versatility and precise tool control
Durable high speed bearing



TECHNICAL DATA

Voltage	220-240V 50~60 Hz
Input Power	135 W
No-load Speed	10000-32000 rpm
Chuck Capacity	Max 3.2mm
Weight	0.7 Kg



DW06416

170W Mini Craft

High quantity bearing
Soft grip
More accessories



TECHNICAL DATA

Voltage	220-240V 50~60 Hz
Input Power	170W
No-load Speed	8000-35000 rpm
Chuck Capacity	Max 3.2mm
Weight	1.8 Kg





APT

Wood Working Tools

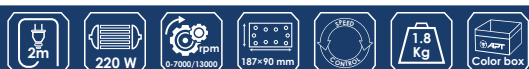
DW08202

220W Sheet Sander

Dust box for clean and efficient sanding with extended sandpaper life
Comfortable clamp lever for easy sand paper installation
Engineered to operate at low noise level with reduced vibration
Large trigger switch and lock-on button for comfortable use during extensive work
Sands wood or metal and removes paint and rust

TECHNICAL DATA

Voltage	220-240V 50~60 Hz
Power Input	220 W
Belt Speed(No-Load)	7000-13000 rpm
Orbital diameter	1.6 mm
Pad Size	187 x 90 mm
Weight	1.8 Kg



DW08203

240W Sheet Sander

Dust box for clean and efficient sanding with extended sandpaper life
Comfortable clamp lever for easy sand paper installation
Engineered to operate at low noise level with reduced vibration
Large trigger switch and lock-on button for comfortable use during extensive work
Sands wood or metal and removes paint and rust

TECHNICAL DATA

Voltage	220-240V 50~60 Hz
Power Input	240 W
Belt Speed(No-Load)	7000-13000 rpm
Orbital diameter	1.6 mm
Pad Size	100 x 110 mm
Weight	1.3 Kg



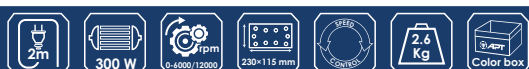
DW08204

300W Sheet Sander

Dust box for clean and efficient sanding with extended sandpaper life
Comfortable clamp lever for easy sand paper installation
Engineered to operate at low noise level with reduced vibration
Large trigger switch and lock-on button for comfortable use during extensive work
Sands wood or metal and removes paint and rust

TECHNICAL DATA

Voltage	220-240V 50~60 Hz
Power Input	300 W
Belt Speed(No-Load)	6000-12000 rpm
Orbital diameter	2 mm
Pad Size	230 x 115 mm
Weight	2.6 Kg



DW08206

300W Orbital Sander

Dust box for clean and efficient sanding with extended sandpaper life
Comfortable clamp lever for easy sand paper installation
Engineered to operate at low noise level with reduced vibration
Large trigger switch and lock-on button for comfortable use during extensive work
Sands wood or metal and removes paint and rust

TECHNICAL DATA

Voltage	220-240V 50~60 Hz
Power Input	300 W
Belt Speed(No-Load)	7000-13000 rpm
Orbital diameter	2 mm
Pad Size	125 mm
Weight	1.3 Kg



DW08212

450W Orbital Sander

Dust box for clean and efficient sanding with extended sandpaper life
Comfortable clamp lever for easy sand paper installation
Engineered to operate at low noise level with reduced vibration
Large trigger switch and lock-on button for comfortable use during extensive work
Sands wood or metal and removes paint and rust

TECHNICAL DATA

Voltage	220-240V 50~60 Hz
Power Input	450 W
Belt Speed(No-Load)	7000-13000 rpm
Orbital diameter	2 mm
Pad Size	150 mm
Weight	0.9 Kg



DW07220-V2

1200W Circular Saw 7 1/4"

Adjustable base plate height
Adjustable angle up to 45°
Improved ergonomic handle design
Better grip, comfortable handling and precise control

TECHNICAL DATA

Voltage	220-240V 50~60 Hz
Input Power	1200W
No-load Speed	4700 rpm
Blade Size	185×20×24T
Bevel Capacity	45°
90° Max.depth of Cut	63 mm
45° Max.depth of Cut	42 mm
Bare Weight	4.3 Kg



DW07230

1500W Circular Saw 7 1/4"

Adjustable base plate height
Adjustable angle up to 45°
Improved ergonomic handle design
Better grip, comfortable handling and precise control

TECHNICAL DATA

Voltage	220-240V 50~60 Hz
Input Power	1500W
No-load Speed	4700 rpm
Blade Size	185×20×24T
Bevel Capacity	45°
90° Max.depth of Cut	63 mm
45° Max.depth of Cut	42 mm
Bare Weight	5.0 Kg



DW07340

2000W Circular Saw 9"

Adjustable base plate height
Adjustable angle up to 45°
Improved ergonomic handle design
Better grip, comfortable handling and precise control

TECHNICAL DATA

Voltage	220-240V 50~60 Hz
Input Power	2000W
No-load Speed	4500 rpm
Blade Size	235×25.4×24T
Bevel Capacity	45°
90° Max.depth of Cut	82 mm
45° Max.depth of Cut	58 mm
Bare Weight	6.3 Kg



DW08300

560W Electric Planner

Reduced wood chip blockage via an improved air flow design
Self locking cap for comfortable use
Improved ergonomic handle design
Better grip, comfortable handling and precise control

TECHNICAL DATA

Voltage	220-240V 50~60 Hz
Input Power	560W
No-load Speed	16000 rpm
Planing width	82mm
Planing depth	Up to 1mm
Rabeting depth	Up to 10mm
Weight	3.6 Kg



DW07402

400W Jig Saw

Variable 6-speed
3 Position pendulum
Blower and vacuum function power
Blade quick chuck

TECHNICAL DATA

Voltage	220-240V 50~60 Hz
Input Power	400 W
No-load Speed	800-3000 rpm
Strok length	18 mm
Max.Depth of cut[Wood]	65 mm
Max.Depth of cut[Stell]	6 mm
Weight	1.5 Kg



DW07413

650W Jig Saw

Variable 6-speed
3 Position pendulum
Blower and vacuum function power
Blade quick chuck

TECHNICAL DATA

Voltage	220-240V 50~60 Hz
Input Power	650 W
No-load Speed	800-3000 rpm
Strok length	19 mm
Max.Depth of cut[Wood]	100 mm
Max.Depth of cut[Stell]	6 mm
Weight	2.4 Kg



DW07455

800W Jig Saw

Variable 6-speed
Adjustable Base Plate up to 45°
-3position pendulum

TECHNICAL DATA

Voltage	220-240V 50~60 Hz
Input Power	800 W
No-load Speed	3000 rpm
Max.Depth of cut[Wood]	110mm
Max.Depth of cut[Stell]	10mm
Weight	2.5 Kg



DW08528

440W Electric Trimmer

Variable 6-speed
3 Position pendulum
Blower and vacuum function power
Blade quick chuck

TECHNICAL DATA

Voltage	220-240V 50~60 Hz
Input Power	440 W
No-load Speed	30000 rpm
Max.Depth of cut[Wood]	6 mm
Weight	1.5 Kg



DW08539

550W Electric Trimmer

Variable 6-speed
3 Position pendulum
Blower and vacuum function power
Blade quick chuck

TECHNICAL DATA

Voltage	220-240V 50~60 Hz
Input Power	550 W
No-load Speed	35000 rpm
Max.Depth of cut[Wood]	8 mm
Weight	1.6 Kg



DW08490

2100W Electric Router

Can be placed upside down for easier bit replacement
Precision cutting depth adjustment
Ergonomically contoured knob style handles
Speed control dial
Trigger switch

TECHNICAL DATA

Voltage	220V~ 60Hz
Input Power	2100W
No-load Speed	9000-22000 rpm
Collet diameter	12mm
Plunge Capacity	Up to 70mm
Weight	6.0 Kg



DW07515

2200W Electric Chain Saw

TECHNICAL DATA

Voltage	220-240V 50~60 Hz
Input Power	2200W
Rotation Frequency	6000 rpm
Bar Length	405mm
Motor Material	Copper
Weight	5.4 Kg (with chain and bar)



DW07705

900W Miter 7.25"

Adjustable tilt up to 45°
Improved ergonomic handle design
better grip, comfortable handling and precise control
Light weight and compact
Aluminium base plate

TECHNICAL DATA

Voltage	220-240V 50~60 Hz
Input Power	900 W
No-load Speed	5500 rpm
Blade Diameter	190 mm (7.25")
Blade Teeth	24 T
Blade Arbour	30 MM
Weight	5.4 Kg



DW07716

1200W Miter Saw 8"

Stronger motor for heavy duty operating
Extra wide die cast base provides stability when cutting a work piece
Tool-free 45° adjustable fence allows for fast and accurate angle cuts
Improved ergonomic handle design
Better grip, comfortable handling and precise control

TECHNICAL DATA

Voltage	220-240V 50~60 Hz
Input Power	1200W
No-load Speed	4500 rpm
Blade Diameter	210mm (8")
Max. workpiece dimensions 0°/90°	45x115 mm
Max. workpiece dimensions 45°/90°	45x80 mm
Max. workpiece dimensions 0°/45°	30x115 mm
Max. workpiece dimensions 45°/45°	27x80 mm
Weight	7.0 Kg



DW07743

2000W Miter Saw 10"

Patented double bell structure
2000W high power motor
Tool-free 45° adjustable fence allows for fast and accurate angle cuts
Improved ergonomic handle design
Better grip, comfortable handling and precise control

TECHNICAL DATA

Voltage	220-240V 50~60 Hz
Input Power	2000W
No-load Speed	5000 rpm
Blade Diameter	10" (254 mm)
Max. workpiece dimensions 0°/90°	70x140 mm
Max. workpiece dimensions 45°/90°	70x100 mm
Max. workpiece dimensions 0°/45°	42x140 mm
Max. workpiece dimensions 45°/45°	42x100 mm
Weight	12.7 Kg



DW07740

2000W Sliding Mitre Saw 10"

Patented double bell structure
2000W high power motor
Tool-free 45° adjustable fence allows for fast and accurate angle cuts
Improved ergonomic handle design
Better grip, comfortable handling and precise control

TECHNICAL DATA

Voltage	220-240V 50~60 Hz
Input Power	2000W
No-load Speed	5000 rpm
Blade Diameter	10" (254 mm)
Max. workpiece dimensions 0°/90°	70x140 mm
Max. workpiece dimensions 45°/90°	70x100 mm
Max. workpiece dimensions 0°/45°	42x140 mm
Max. workpiece dimensions 45°/45°	42x100 mm
Weight	12.7 Kg



DW07755

2200W Belt Driven Miter Saw 12"

Patented double bell structure
Extra wide die cast base providing stability during the cutting process
Tool-free 45° provides stability when cutting work
Improved ergonomic handle design
Better grip, comfortable handling and precise control

TECHNICAL DATA

Voltage	220-240V 50~60 Hz
Input Power	2200W
No-load Speed	4500 rpm
Blade Diameter	12" (305 mm)
Max. workpiece dimensions 0°/90°	65x190 mm
Max. workpiece dimensions 45°/90°	65x140 mm
Max. workpiece dimensions 0°/45°	45x195 mm
Max. workpiece dimensions 45°/45°	45x135 mm
Weight	23 Kg



DW07742

1800W Compound Miter Saw 10"

Patented double bell structure
Extra wide die cast base providing stability during the cutting process
Tool-free 45° provides stability when cutting work
Improved ergonomic handle design
Better grip, comfortable handling and precise control

TECHNICAL DATA

Voltage	220-240V 50~60 Hz
Input Power	1800W
No-load Speed	3500 rpm
Blade Diameter	254 mm
Saw Blade Bore Diameter	Ø25.4, Ø30 mm
Saw Body Tilting Range	0~45
Table Tilting Range	L45 ~R45
Max. workpiece dimensions 0°/90°	70x140 mm
Max. workpiece dimensions 45°/90°	70x100 mm
Max. workpiece dimensions 0°/45°	42x140 mm
Max. workpiece dimensions 45°/45°	42x100 mm
Weight	13.8 Kg



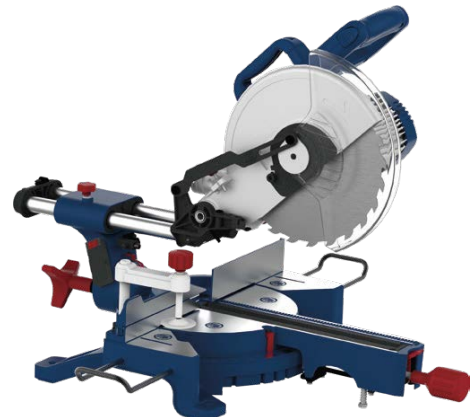
DW07745

1800W Induction Motor Sliding Miter Saw 10"

Patented double bell structure
Extra wide die cast base providing stability during the cutting process
Tool-free 45° provides stability when cutting work
Improved ergonomic handle design
Better grip, comfortable handling and precise control

TECHNICAL DATA

Voltage	220-240V 50~60 Hz
Input Power	1800W
No-load Speed	2950 rpm
Blade Diameter	254 mm
Saw Blade Bore Diameter	Ø25.4, Ø30 mm
Saw Body Tilting Range	0~45
Table Tilting Range	L45 ~R45
Max. workpiece dimensions 0°/90°	70x140 mm
Max. workpiece dimensions 45°/90°	70x100 mm
Max. workpiece dimensions 0°/45°	42x140 mm
Max. workpiece dimensions 45°/45°	42x100 mm
Weight	18.6 Kg



DW07760

1600W Induction Motor Sliding Miter Saw 12"

Patented double bell structure
Extra wide die cast base providing stability during the cutting process
Tool-free 45° provides stability when cutting work
Improved ergonomic handle design
Better grip, comfortable handling and precise control

TECHNICAL DATA

Voltage	220-240V 50~60 Hz
Input Power	1600W
No-load Speed	3500 rpm
Blade Diameter	305 mm (12")
Saw Blade Bore Diameter	Ø25.4, Ø30 mm
Saw Body Tilting Range	0~45
Table Tilting Range	L45 ~R45
Max. workpiece dimensions 0°/90°	65x190 mm
Max. workpiece dimensions 45°/90°	65x140 mm
Max. workpiece dimensions 0°/45°	45x195 mm
Max. workpiece dimensions 45°/45°	45x135 mm
Weight	13.8 Kg



DW07762

1800W Compound Miter Saw 12"

Patented double bell structure
Extra wide die cast base providing stability during the cutting process
Tool-free 45° provides stability when cutting work
Improved ergonomic handle design
Better grip, comfortable handling and precise control

TECHNICAL DATA

Voltage	220-240V 50~60 Hz
Input Power	1800W
No-load Speed	3500 rpm
Blade Diameter	305 mm
Saw Blade Bore Diameter	Ø25.4, Ø30 mm
Saw Body Tilting Range	0~45°
Table Tilting Range	L45 ~R45
Max. workpiece dimensions 0°/90°	65x190 mm
Max. workpiece dimensions 45°/90°	65x140 mm
Max. workpiece dimensions 0°/45°	45x195 mm
Max. workpiece dimensions 45°/45°	45x135 mm
Weight	16.3 Kg



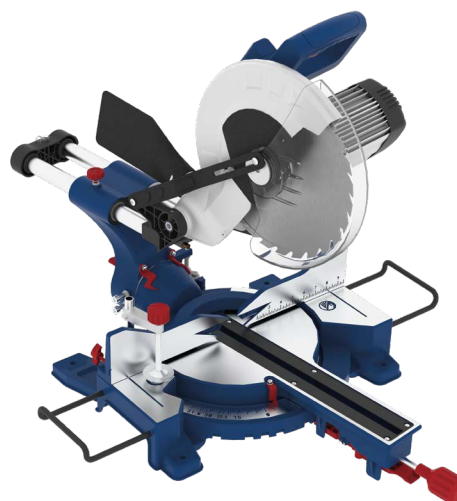
DW07765

1800W Sliding Miter Saw Belt 12"

Patented double bell structure
Extra wide die cast base providing stability during the cutting process
Tool-free 45° provides stability when cutting work
Improved ergonomic handle design
Better grip, comfortable handling and precise control

TECHNICAL DATA

Voltage	220-240V 50~60 Hz
Input Power	1800W
No-load Speed	3500 rpm
Blade Diameter	305 mm
Saw Blade Bore Diameter	Ø25.4, Ø30 mm
Saw Body Tilting Range	0~45°
Table Tilting Range	L45 ~R45
Max. workpiece dimensions 0°/90°	65x190 mm
Max. workpiece dimensions 45°/90°	65x140 mm
Max. workpiece dimensions 0°/45°	45x195 mm
Max. workpiece dimensions 45°/45°	45x135 mm
Weight	21.5 Kg





APT



Other Tools

DW09320A-V4 450W Electric Blower

Double function (In/Out)
with lock on switch for easy control
Light weight suitable for home use

TECHNICAL DATA

Voltage	220-240V 50~60 Hz
Input Power	450W
No-load Speed	13000 rpm
Blowing Rate	2.3 m³/min
Weight	1.3 Kg



DW09325-V4 480W Electric Blower

Double function (In/Out)
with lock on switch for easy control
Light weight suitable for home use

TECHNICAL DATA

Voltage	220-240V 50~60 Hz
Input Power	480W
No-load Speed	13000 rpm
Blowing Rate	2.3 m³/min
Weight	1.3 Kg



DW09370-V4 600W Electric Blower

Long life, easy operation
High temperature resistant copper wire
Strong power, high efficient and durable

TECHNICAL DATA

Voltage	220-240V 50~60 Hz
Input Power	600W
No-load Speed	5000-15000 rpm
Blowing Rate	2.8 m³/min
Weight	1.7 Kg



DW09800

650W Electric Blower

Double function (In/Out)
Large cloth bag, firm and durable
Efficient motor
Less heat generation over long periods of operation

TECHNICAL DATA

Voltage	220-240V 50~60 Hz
Input Power	650W
No-load Speed	14000 rpm
Blowing Rate	2.8 m³rpm
Weight	2.1 Kg



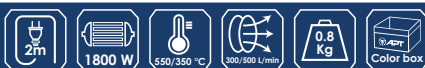
DW09223-V4

1800W Heat Gun

Powerful 1800-watt
2-stage temperature selection for a variety of applications
Compact, robust and durable

TECHNICAL DATA

Voltage	220-240V 50~60 Hz
Input Power	1800W
Temperature	350/550 °C
Airflow	300/ 500 L/min
Weight	0.8 Kg



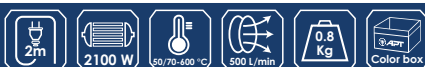
DW09250

2000W Heat Gun

Powerful 2000-watt
2-stage temperature selection for a variety of applications
Compact, robust and durable

TECHNICAL DATA

Voltage	220-240V 50~60 Hz
Input Power	2100 W
Temperature	50/ 70-600 °C
Airflow	500 L/min
Weight	0.8 Kg



DW09253-V4

2100W Heat Gun

Powerful 1500-watt
2-stage temperature selection for a variety of applications
Compact, robust and durable



TECHNICAL DATA

Voltage	220-240V 50~60 Hz
Input Power	2100W
Temperature	50/ 70-600 °C
Airflow	500 L/min
Weight	0.8 Kg

Available as



DW08252

820W Drywall and Ceiling Swivel Sander

Variable speed
Powerful self-vacuum
10W LED lights surrounding the pad with 3cm distance to the working area
Externally accessible brushes for greater service ability and longer motor life



TECHNICAL DATA

Voltage	220-240V 50~60 Hz
Input Power	820W
No-load Speed	600-1900 rpm
Platen Diameter	254 mm
Weight	3.5 Kg



DW09530

1400W Electric Mixer

Soft start
Variable speed
Safety on/off switch with lock-on button for continuous operation
Ergonomically designed handle
Robust gearbox with powerful high torque motor

TECHNICAL DATA

Voltage	230V 50 Hz
Power Input	1400 W
No-load Speed	0-800 rpm
Paddle connection thread	M14 x 2
Max. mixing paddle size	120mm
Weight	13.5 Kg



DW09535

1400W Electric Mixer

Soft start
Variable speed
Safety on/off switch with lock-on button for continuous operation
Ergonomically designed handle
Robust gearbox with powerful high torque motor

TECHNICAL DATA

Voltage	230V 50 Hz
Power Input	1400 W
No-load Speed	0-480/0-800 rpm
Paddle connection thread	M14 x 2
Max. mixing paddle size	140mm
Weight	16.0 Kg



DW09540

1600W Electric Mixer

Soft start
2-speed power mixer with double mixing paddles
High performance with 2 paddles working clockwise and anti-clockwise respectively
Robust gearbox with powerful high torque motor

TECHNICAL DATA

Voltage	230V 50 Hz
Power Input	1600 W
No-load Speed	200-480/250-680 rpm
Paddle connection thread	M14
Max. mixing paddle size	120mm
Weight	18.5 Kg





APT

LED Light



LHDL203R

200lm Rechargeable LED Headlamp

TECHNICAL DATA

Flood	20-200 lumen
Spot	120 lumen High power LED
Operating time	Flood 2.5-25h, Spot 3h
Charging time	3h
Battery	3.7V 1400mAh Li-poly
Protection class	IP54 / IK07
Dimensions	68x 34 x 40mm
Weight	95g



HDL121R

120lm Recharge & Detachable LED Headlamp

TECHNICAL DATA

Flood	60-120 lumen
Operating time	5h/2.5h
Charging time	2-3h
Battery	3.7V 800mAh Li-poly
Protection class	IP65, IK07
Dimensions	94 x 43 x 37mm
Weight	95g



SLM351R

350lm Rechargeable Led Mini Torch

TECHNICAL DATA

Flood	30-350 lumen
Top high power LED	100 lumen
Operating time	Flood 2-20 h, Spot 3.5 h
Charging time	2-3h
Battery	3.7V 1500mAh Li-poly
Protection class	IP54 / IK07
Dimensions	44 x 24 x 116mm
Weight	120g



DW3000052

5W Mini Cordless Standing Flash Light

Focus adjusting knob
180 adjustable angle
Convenient hook design for easy fixation on the jobsite

TECHNICAL DATA

Voltage	20 V
Battery capacity	2.0 Ah
Led power dissipation	5 W
Brightness (min/max)	150/300 Lm
Bare Weight	0.2 Kg



DW3000102

10W Cordless Standing Flash Light

Long visual distance
Energy Saving
Adjustable brightness

TECHNICAL DATA

Voltage	20 V
Battery capacity	2.0 Ah
Led power dissipation	10 W
Brightness (min/max)	500/1000 Lm
Bare Weight	0.4 Kg



DW3000202

20W Cordless Standing Flash Light

High-quality LED
Tempered glass mask

TECHNICAL DATA

Voltage	20 V
Battery capacity	2.0 Ah
Led power dissipation	20 W
Brightness (min/max)	900/2000 lumens
Bare Weight	0.7 Kg

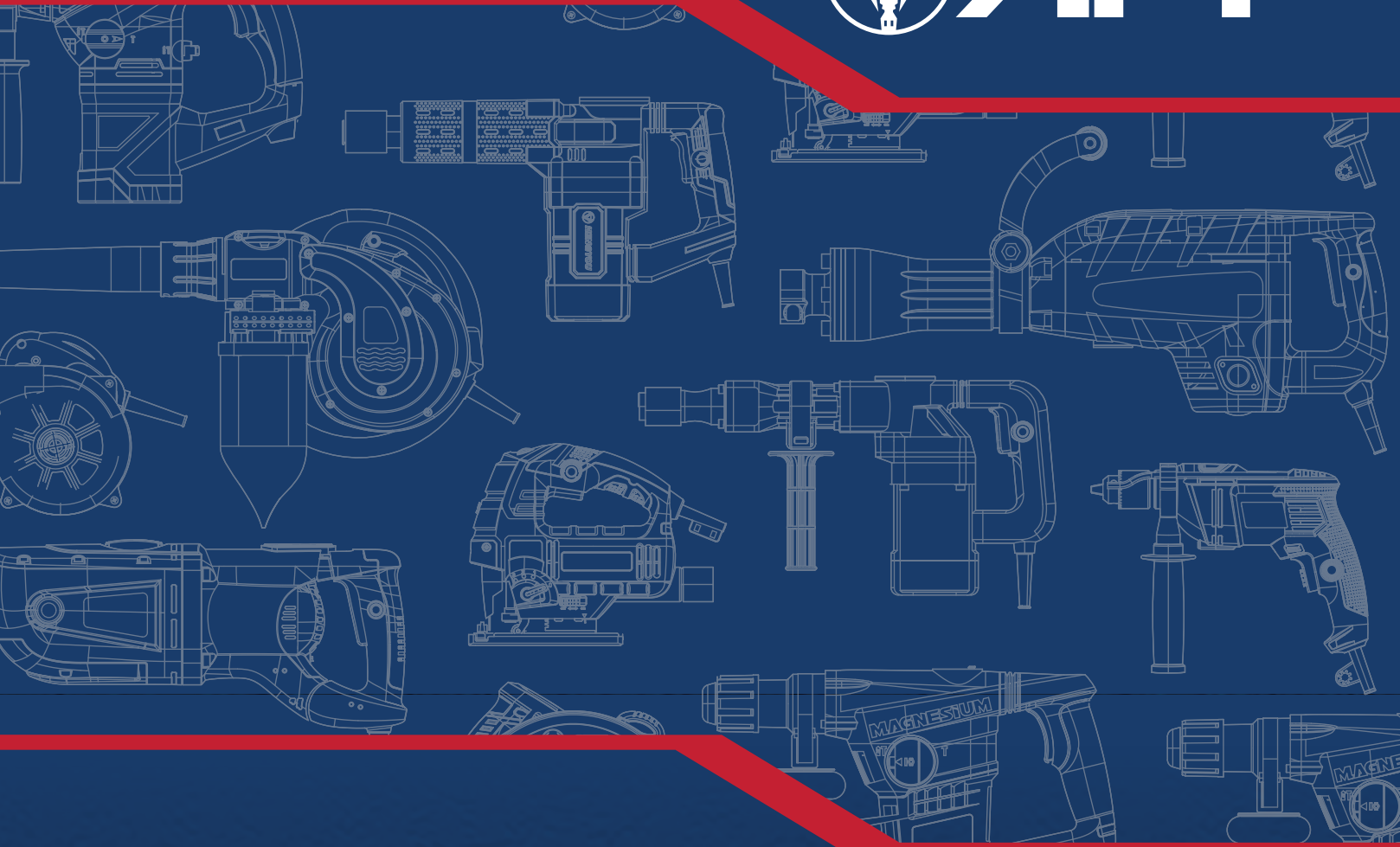


Check Our Range



APT

The Name You Can Trust



Contact Us



Info@apt-international.com

